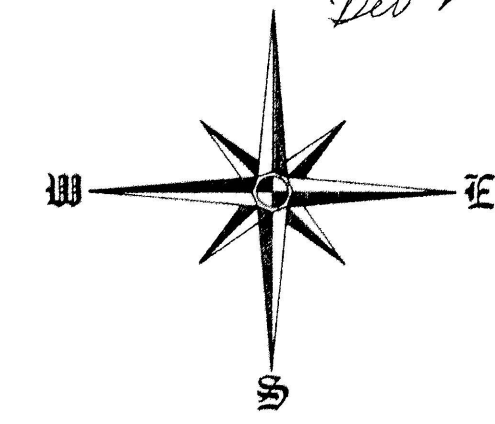


AMENDED CEDAR ACRES SUBDIVISION

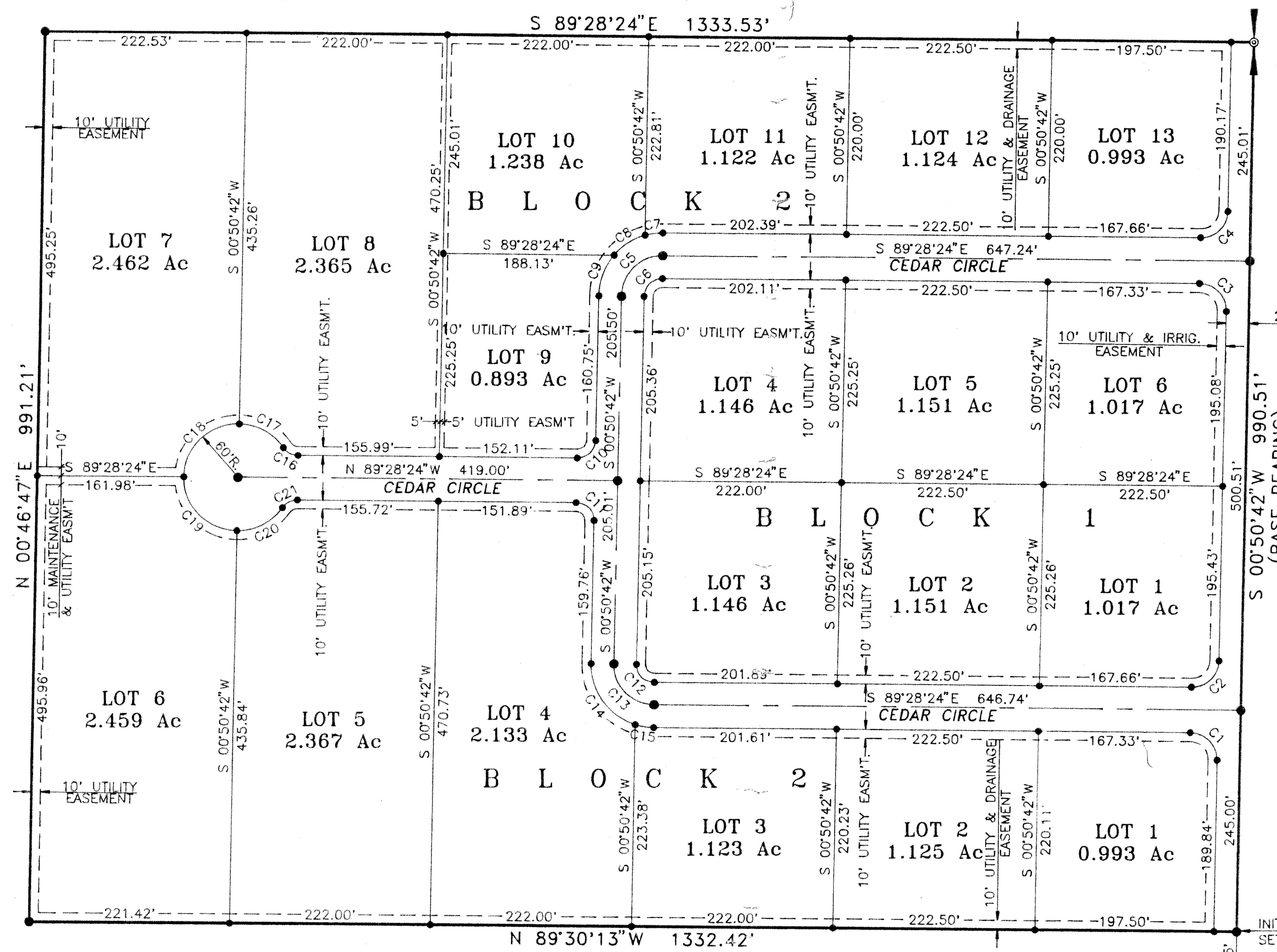
On 25

North *Dev & John*



SCALE
1" = 100'

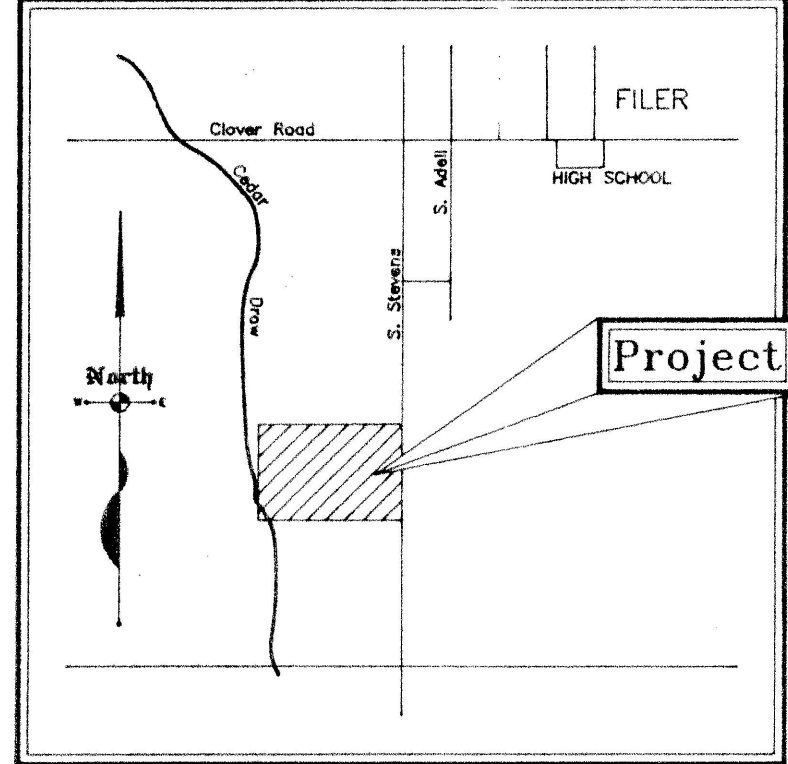
LOCATED IN
NE⁴ SE⁴ SECTION 18
TOWNSHIP 10 SOUTH,
RANGE 16 EAST,
BOISE MERIDIAN,
TWIN FALLS COUNTY, IDAHO
1994



NOTES:

1. LOTS 4 THRU 8-BLOCK 2 CANNOT BE SPLIT INTO SMALLER PARCELS UNLESS PUBLIC SEWAGE FACILITIES ARE AVAILABLE.
2. LOTS WILL BE SERVED BY INDIVIDUAL SUBSURFACE SEWAGE SYSTEMS AND INDIVIDUAL DOMESTIC WELLS - REFER TO LETTER ON FILE WITH THE COUNTY RECORDER FROM THE SOUTH CENTRAL DISTRICT HEALTH DEPARTMENT.

VICINITY SKETCH

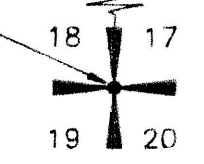


NOT TO SCALE

CURVE DATA

CURVE	DELTA	RADIUS	ARC	CHORD	TANGENT	CHORD BRG
1	90°19'06"	30.00	47.29	42.54	30.17 N 44°18'51"W	
2	89°40'54"	30.00	46.96	42.31	29.83 N 45°41'09"E	
3	90°19'06"	30.00	47.29	42.54	30.17 N 44°18'51"W	
4	89°40'54"	30.00	46.96	42.31	29.83 N 45°41'09"E	
5	89°40'54"	45.00	70.44	63.46	44.75 S 45°41'09"W	
6	89°40'54"	20.00	31.30	28.21	19.89 S 45°41'09"W	
7	16°17'00"	70.00	19.89	19.83	10.01 S 82°23'06"W	
8	33°42'41"	70.00	41.19	40.59	21.21 S 57°23'15"W	
9	39°41'13"	70.00	48.49	47.52	25.26 S 20°41'18"W	
10	89°40'54"	20.00	31.30	28.21	19.89 N 45°41'09"E	
11	90°19'06"	20.00	31.53	28.36	20.11 N 44°18'51"W	
12	90°19'06"	20.00	31.53	28.36	20.11 N 44°18'51"W	
13	90°19'06"	45.00	70.94	63.82	45.25 S 44°18'51"E	
14	73°23'54"	70.00	89.67	83.67	52.17 S 35°51'16"E	
15	16°55'11"	70.00	20.67	20.60	10.41 S 81°00'48"E	
16	55°46'16"	20.00	19.47	18.71	10.58 S 61°35'16"E	
17	55°27'11"	60.00	58.07	55.83	31.54 N 61°25'43"W	
18	90°19'06"	60.00	94.58	85.09	60.33 S 45°41'09"W	
19	89°40'54"	60.00	93.91	84.62	59.67 S 44°18'51"E	
20	56°05'21"	60.00	58.74	56.42	31.96 N 62°48'01"E	
21	55°46'16"	20.00	19.47	18.71	10.58 S 62°38'28"W	

FND. R.R. SPIKE
SET 1/2" x 24" REBAR & CAP



LEGEND

- SUBDIVISION BOUNDARY LINE
- STREET CENTERLINE
- EASEMENT LINE
- FND. REBAR W/ALUM. CAP
- SET 5/8" x 30" REBAR & CAP
- SET 1/2" x 30" REBAR & CAP