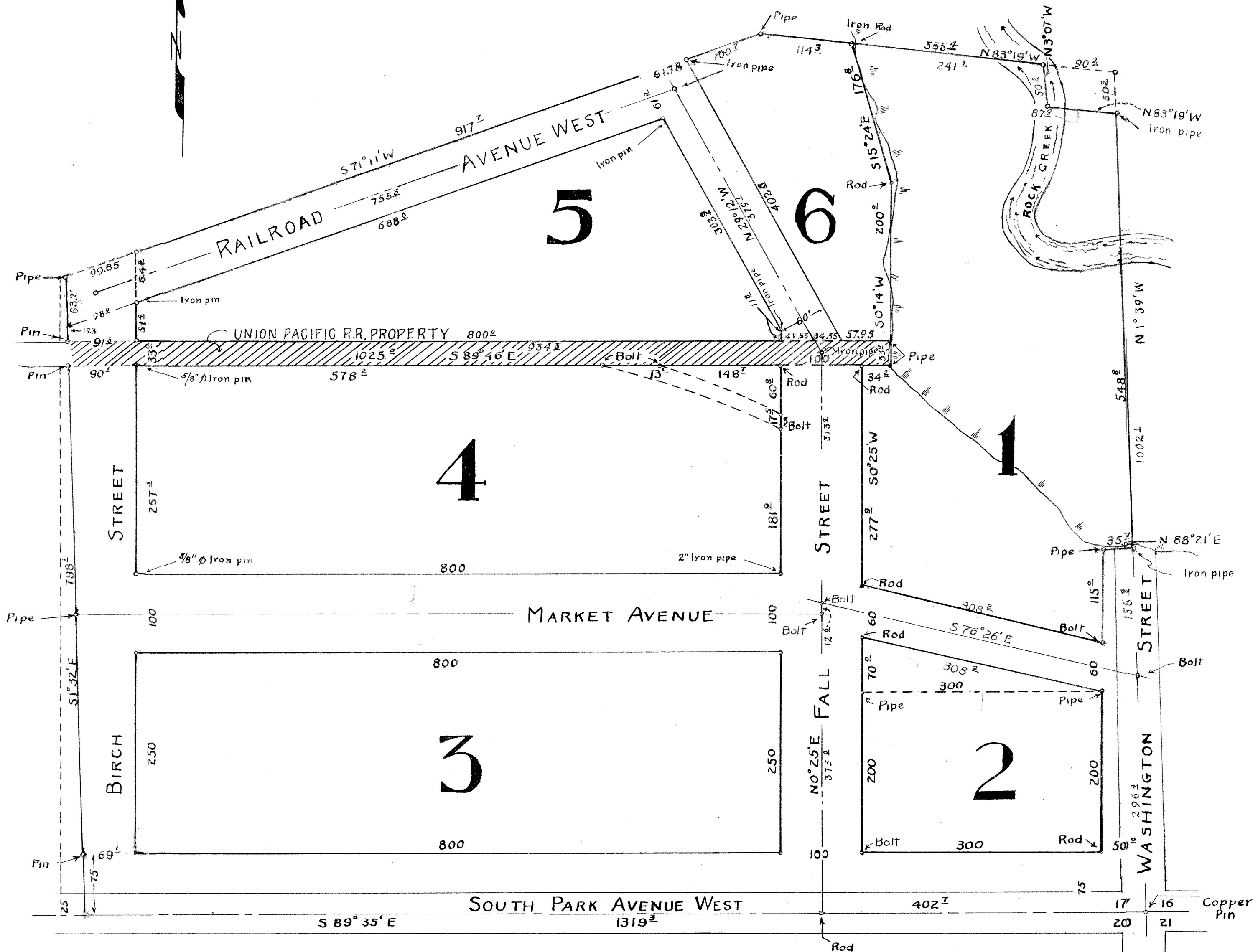


# CHAMBER OF COMMERCE INDUSTRIAL SITE SUBDIVISION

PART OF SE<sup>4</sup>SE<sup>4</sup>SEC. 17 T 10 S R 17 E.B.M.

## TWIN FALLS IDAHO

SCALE 1"=100'



CHAMBER OF COMMERCE INDUSTRIAL SITE SUBD Book 6 - Page 45