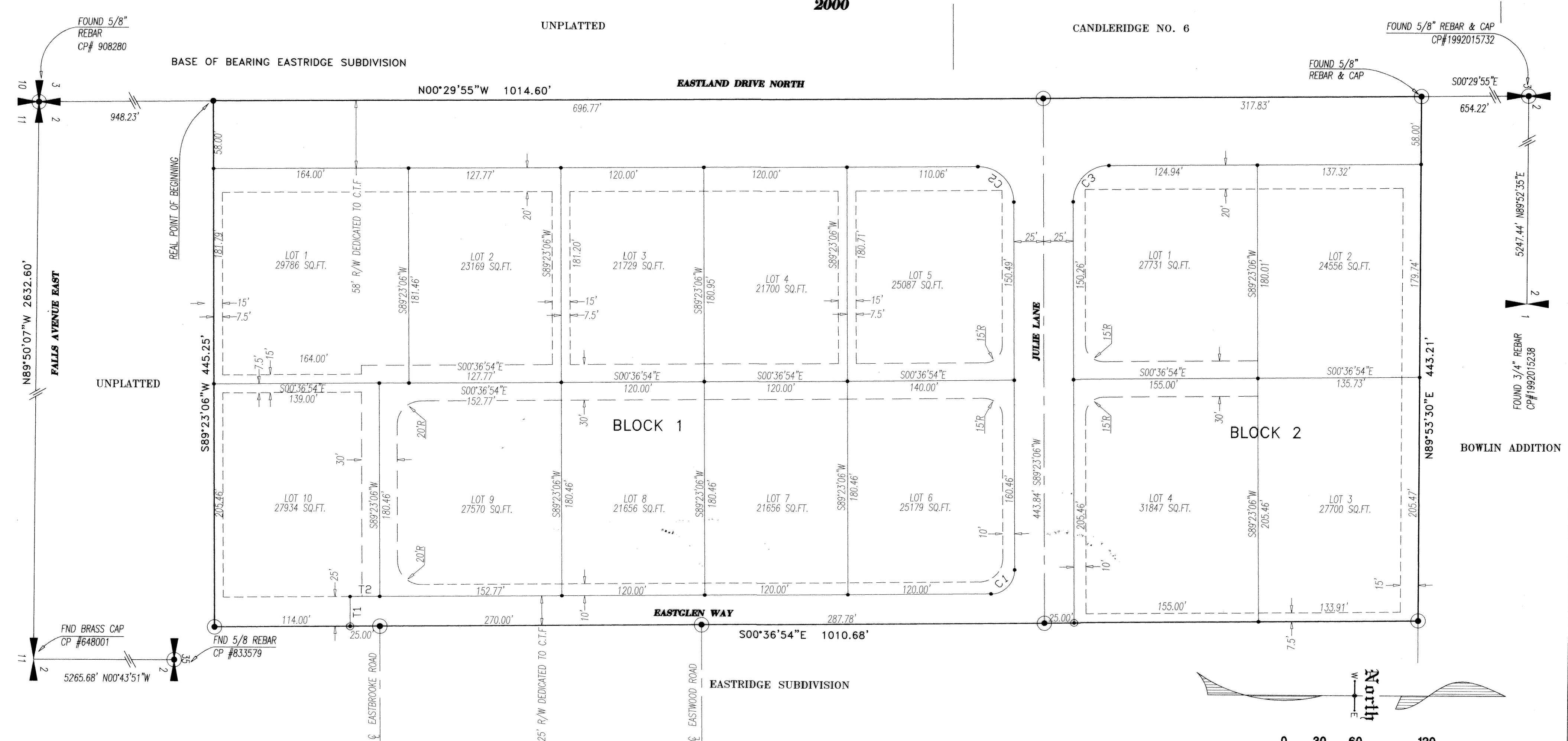


EASTRIDGE PROFESSIONAL SUBDIVISION

LOCATED IN A PORTION OF
W1/2 SW1/4, SECTION 2
T. 10 S., R. 17 E., B.M.
TWIN FALLS COUNTY, IDAHO
2000

Twin Falls County, Idaho
 Recorded for:
EHM ENGINEERS, INC.
 04:18pm Nov. 16, 2000
2000-017910
 No. of Pages: 2 Fee: \$22.00
 ROBERT S. FORT
 Ex-Officio Recorder
 Deputy: CH



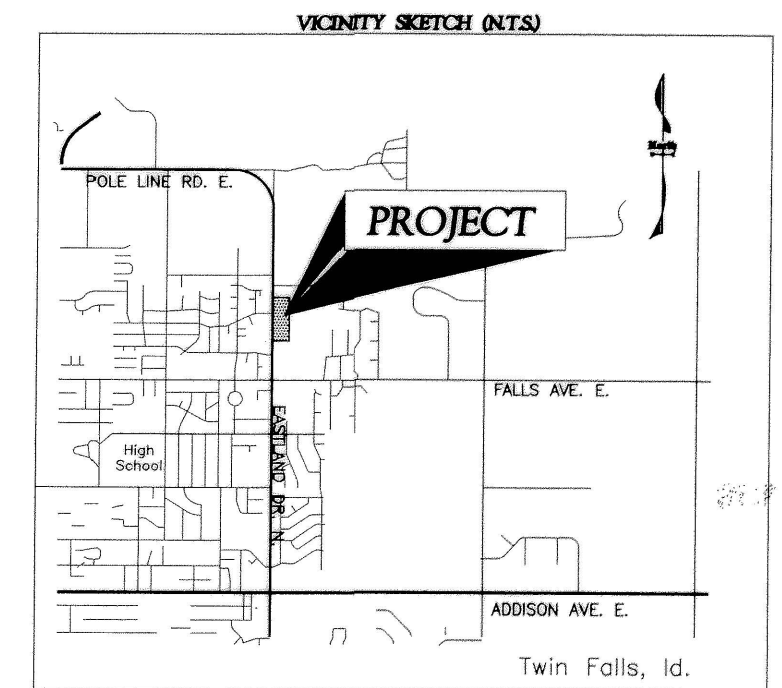
HEALTH CERTIFICATE
 Sanitary restrictions as required by Idaho Code Title 50, Chapter 13, have been satisfied. Sanitary restrictions may be reimposed, in accordance with Idaho Code Title 50, Chapter 13, Section 50-1326, by the issuance of a certificate of disapproval.
 Date: Nov. 2, 2000
 South Central District Health Dept., EHS

CURVE TABLE

NUMBER	DELTA	CHORD BRG	RADIUS	LENGTH	TANGENT	CHD LENGTH
C1	90°00'00"	N 45°36'54" W	20.00'	31.42'	20.00'	28.28'
C2	89°53'01"	N 44°26'35" E	30.00'	47.06'	29.94'	42.38'
C3	90°06'59"	N 45°33'25" W	30.00'	47.19'	30.06'	42.47'

TANGENT TABLE

NUMBER	DISTANCE	BEARING
T1	25.00'	N 89°23'06" E
T2	25.00'	S 00°36'54" E



LEGEND

- SUBDIVISION BOUNDARY _____
- LOT LINE _____
- STREET CENTERLINE _____
- ACCESS, UTILITY & DRAINAGE EASEMENT _____
- UTILITY, DRAINAGE & IRR EASEMENT _____
- SET 5/8" x 30" REBAR & CAP (LS 1000) ●
- SET 1/2" x 24" REBAR & CAP (LS 1000) ●
- FOUND 5/8" REBAR & CAP ○
- FOUND 1/2" REBAR & CAP ○

EHM Engineers, Inc.
 ENGINEERS/SURVEYORS/PLANNERS

BK 17 Pg 26
 Eastridge Prof. Subd.