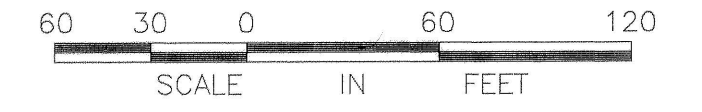


INST # 2002-011521 142  
 BK 18 PG 13  
 FOR Eastwood Subd. Phase 1  
 T 10 S R 17 E SEC 14

# EASTWOOD SUBDIVISION, PHASE 1

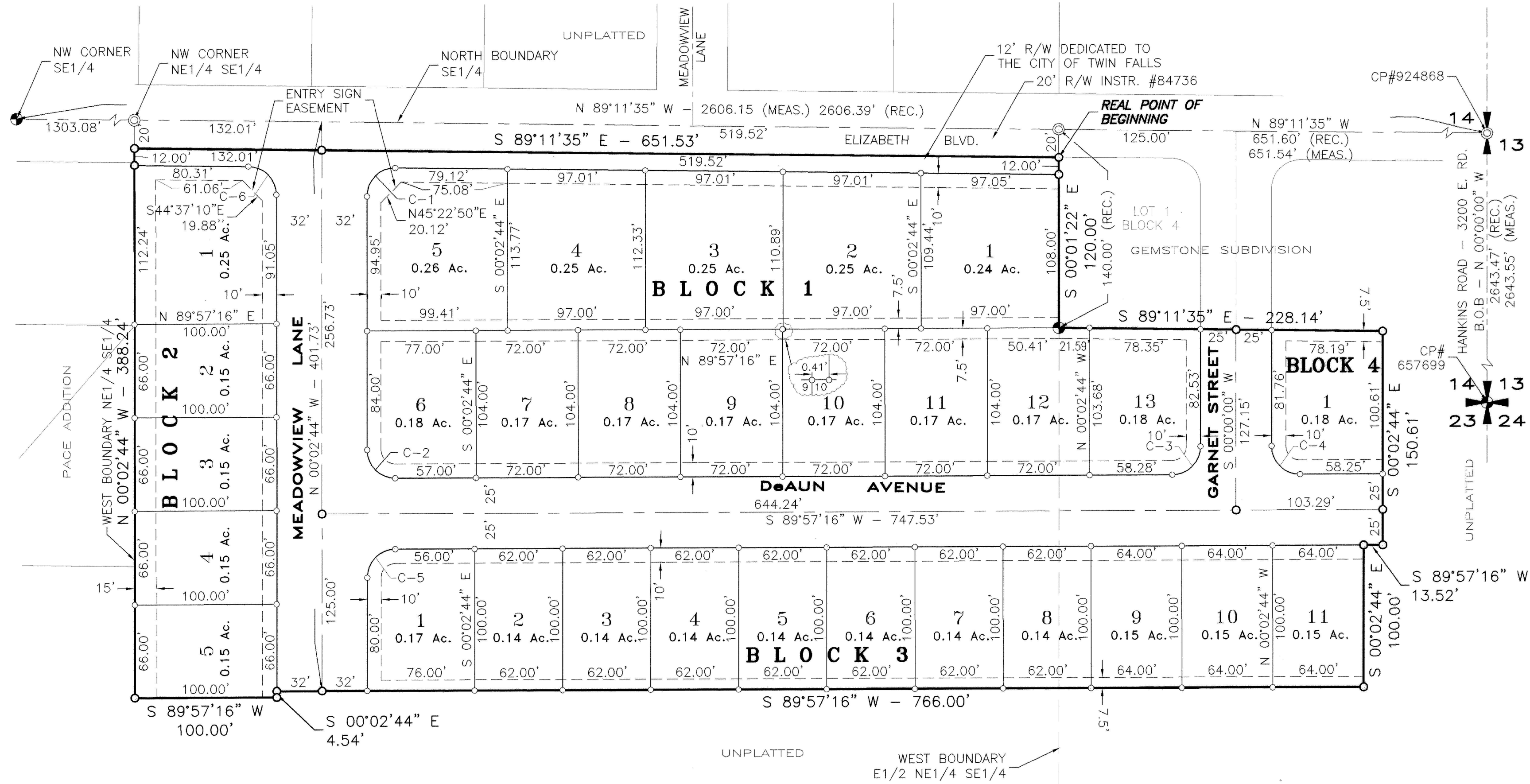
A PORTION OF  
 THE NE 1/4, SE 1/4, SECTION 14  
 T. 10 S., R. 17 E., B.M.  
 TWIN FALLS COUNTY, IDAHO  
 2002  
 6.97 ACRES



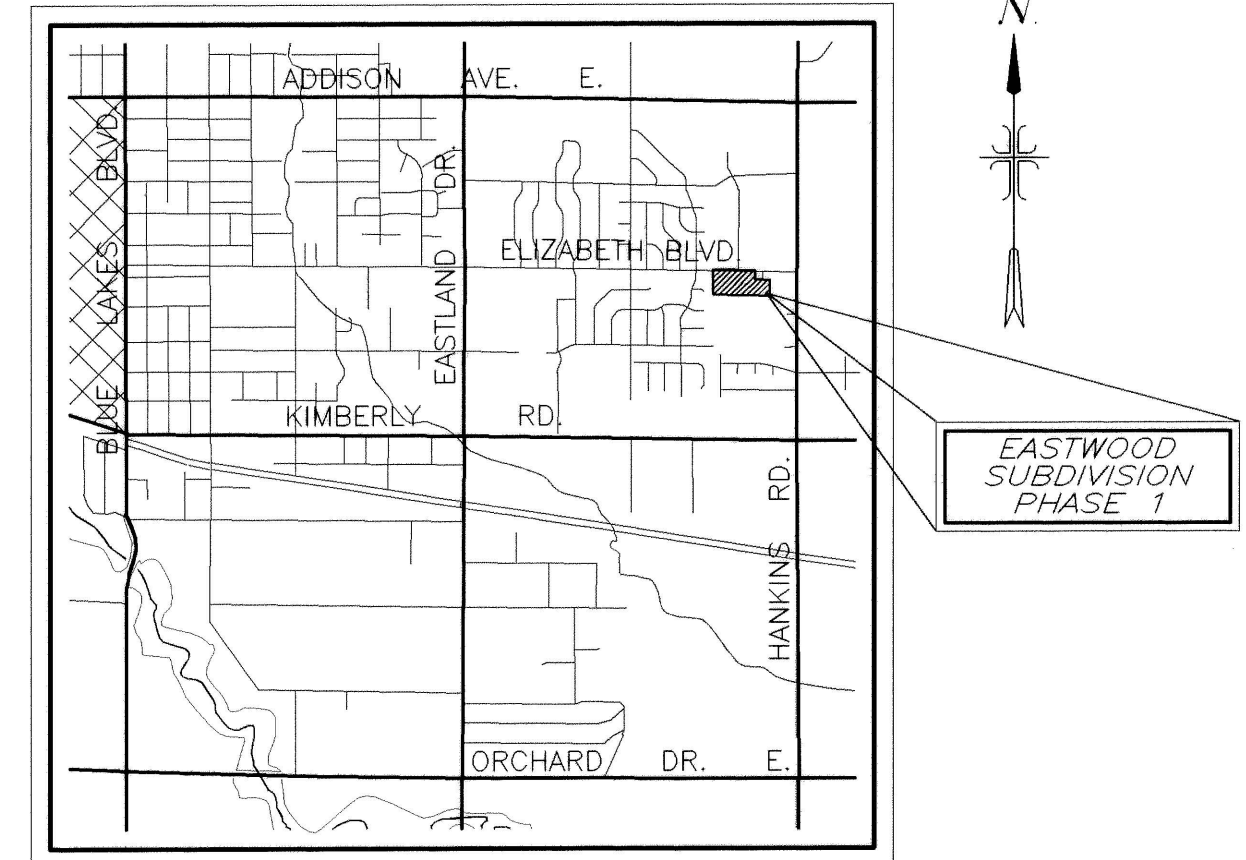
Twin Falls County, Idaho  
 Recorded for:  
**RIEDEL**  
 02:03pm Jun. 06, 2002  
**2002-011521**  
 No. of Pages: 2 Fee: \$22.00  
 ROBERT S. FORT  
 Ex-Officio Recorder  
 Deputy: SL

### LEGEND

- BOUNDARY LINE
- - - SUBDIVISION LOT BOUNDARY
- - - SECTION LINE
- - - CENTERLINE
- - - UTILITY/DRAINAGE EASEMENT
- BRASS CAP FOUND
- ⊙ FOUND 5/8"x 30" REBAR
- SET 1/2"x 24" REBAR & CAP
- SET 5/8"x 30" REBAR & CAP
- 8 LOT NUMBER



2002-011521



### CURVE DATA

CURVE	DELTA	RADIUS	ARC	CHORD	TANGENT	CHORD BEARING
C-1	90°51'09"	20.00'	31.71'	28.49'	20.30'	N 45°22'50" E
C-2	90°00'00"	20.00'	31.42'	28.28'	20.00'	N 45°02'44" W
C-3	89°57'16"	20.00'	31.40'	28.27'	19.98'	S 44°58'38" W
C-4	90°02'44"	20.00'	31.43'	28.30'	20.02'	N 45°01'22" W
C-5	90°00'00"	20.00'	31.42'	28.28'	20.00'	N 44°57'16" E
C-6	89°08'51"	20.00'	31.12'	28.07'	19.70'	S 44°37'09" E

**NOTE:**  
 IRRIGATION WATER RIGHTS WILL BE TRANSFERRED TO THE CITY OF TWIN FALLS REGIONAL IRRIGATION DISTRICT AND A LOW PRESSURE IRRIGATION SYSTEM WILL BE PROVIDED.  
 SIGN EASEMENT - LOT 1, BLOCK 2 AND LOT 5, BLOCK 1 ARE SUBJECT TO AN EASEMENT FOR A SUBDIVISION ENTRY SIGN AS NOTED HEREON.

**REF:**  
 WARRANTY DEED #226-3203 AND #1994-007370.

### HEALTH CERTIFICATE

SANITARY RESTRICTIONS AS REQUIRED BY IDAHO CODE TITLE 50, CHAPTER 13, HAVE BEEN SATISFIED. SANITARY RESTRICTIONS MAY BE REIMPOSED, IN ACCORDANCE WITH THE IDAHO CODE TITLE 50, CHAPTER 13, SECTION 50-1326, BY THE ISSUANCE OF A CERTIFICATE OF DISAPPROVAL.

DATE May 22, 2002 SOUTH CENTRAL DISTRICT HEALTH DEPT., EHS  
 # 219

RIEDEL ENGINEERING LLC  
 202 FALLS AVENUE  
 TWIN FALLS, IDAHO 83301  
 EASTWOOD SUBDIVISION, PHASE 1  
 SHEET 1 OF 2

