

# EASTWOOD SUBDIVISION, PHASE 4

A PORTION OF THE SE 1/4, SECTION 14 T. 10 S., R. 17 E., B.M. TWIN FALLS COUNTY, IDAHO 2003 7.85 ACRES

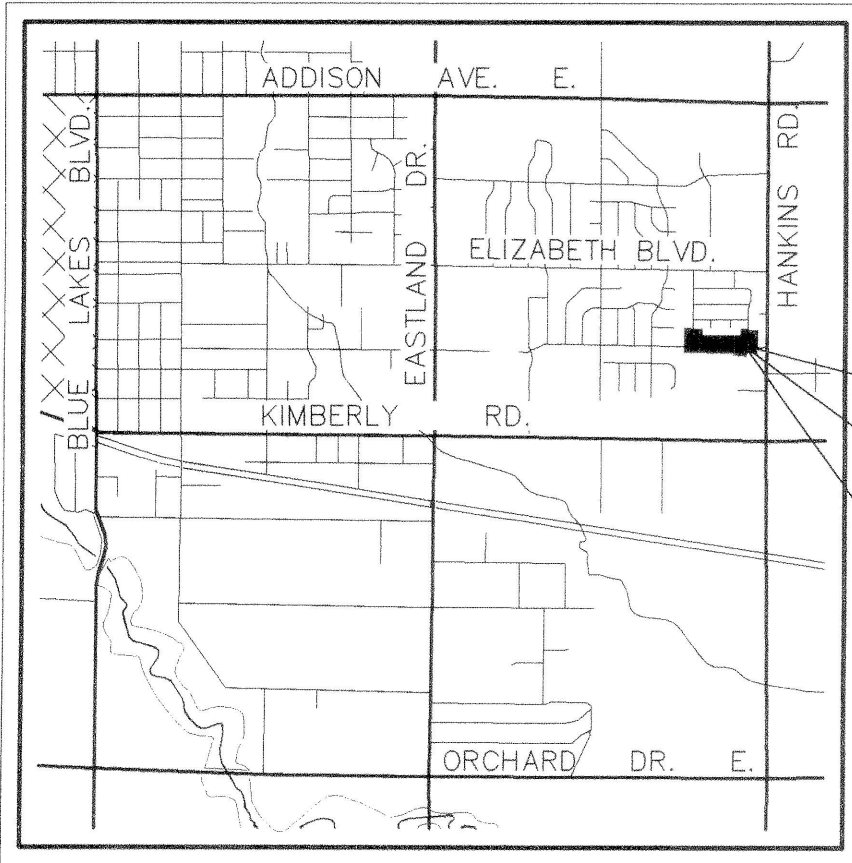
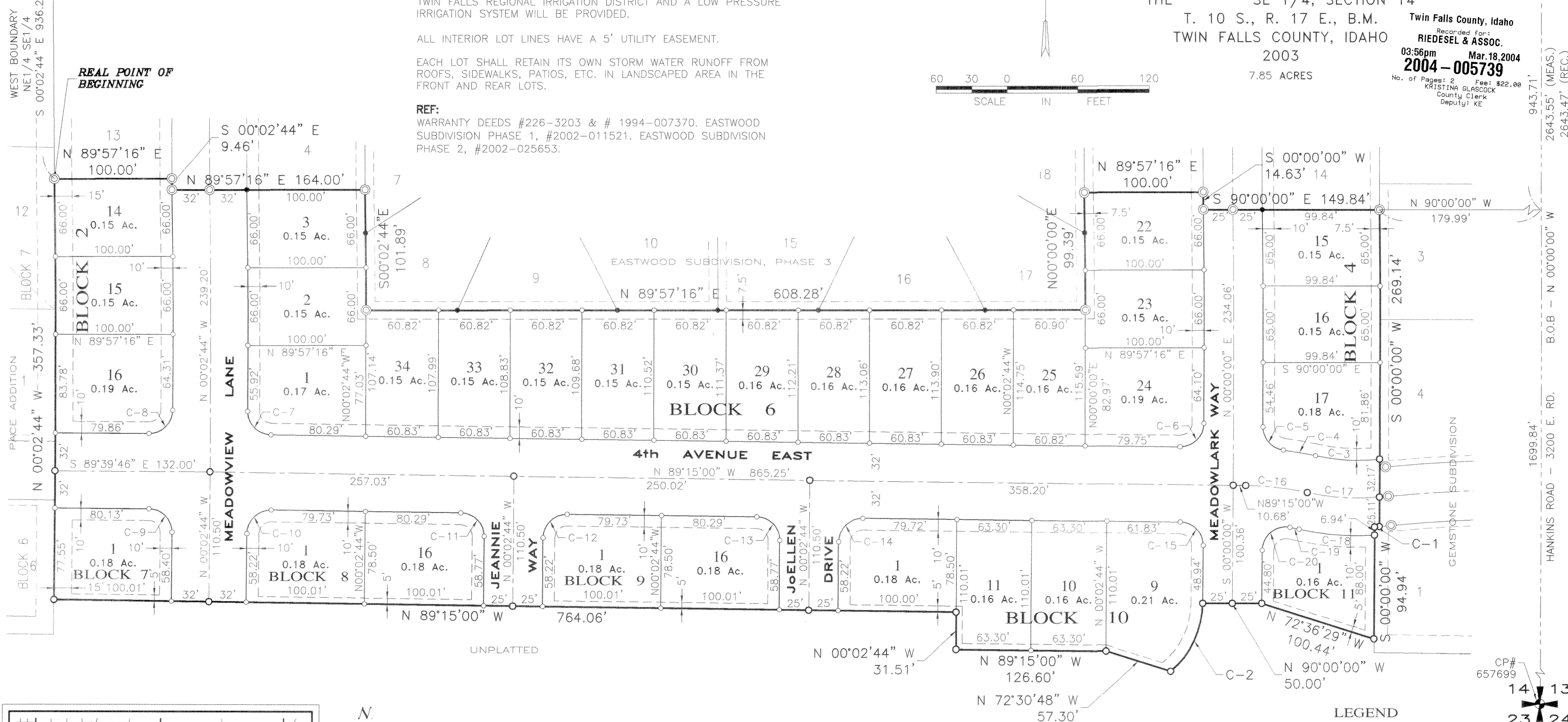
Twin Falls County, Idaho  
 Recorded for: RIEDESEL & ASSOC.  
 KRISTINA GLASCOCK County Clerk  
 Deputy: KE  
 03:56pm Mar. 18, 2004  
**2004-005739**  
 No. of Pages: 2 Fee: \$22.00  
 County Clerk Deputy: KE

**NOTES:**  
 IRRIGATION WATER RIGHTS WILL BE TRANSFERRED TO THE CITY OF TWIN FALLS REGIONAL IRRIGATION DISTRICT AND A LOW PRESSURE IRRIGATION SYSTEM WILL BE PROVIDED.

ALL INTERIOR LOT LINES HAVE A 5' UTILITY EASEMENT.

EACH LOT SHALL RETAIN ITS OWN STORM WATER RUNOFF FROM ROOFS, SIDEWALKS, PATIOS, ETC. IN LANDSCAPED AREA IN THE FRONT AND REAR LOTS.

**REF:**  
 WARRANTY DEEDS #226-3203 & # 1994-007370. EASTWOOD SUBDIVISION PHASE 1, #2002-011521. EASTWOOD SUBDIVISION PHASE 2, #2002-025653.



VICINITY MAP  
 NOT TO SCALE

UNPLATTED

**LEGEND**

- BOUNDARY LINE
- SUBDIVISION LOT BOUNDARY
- - - - SECTION LINE
- - - - CENTERLINE
- - - - UTILITY EASEMENT
- ⊙ BRASS CAP FOUND
- ⊙ FOUND 5/8"x 30" REBAR
- FOUND 1/2" REBAR
- SET 1/2"x 24" REBAR & CAP
- SET 5/8"x 30" REBAR & CAP
- 8 LOT NUMBER
- B.O.B. BASIS OF BEARING

**CURVE DATA TABLE**

CURVE	DELTA	RADIUS	ARC	CHORD	TANGENT	CHORD BEARING
C-1	00°11'30"	1199.15'	4.01'	4.01'	2.01'	S 84°50'26" W
C-2	50°01'54"	75.00'	65.49'	63.43'	35.00'	S 25°00'57" W
C-3	18°46'39"	168.00'	55.06'	54.81'	27.78'	S 87°00'17" E
C-4	05°27'35"	292.98'	27.92'	27.91'	13.97'	S 80°20'45" E
C-5	83°04'32"	20.00'	29.00'	26.52'	17.72'	S 41°32'16" E
C-6	90°45'00"	20.00'	31.68'	28.47'	20.26'	S 45°22'30" W
C-7	89°12'16"	20.00'	31.14'	28.09'	19.72'	N 44°38'52" W
C-8	90°22'58"	20.00'	31.55'	28.38'	20.13'	S 45°08'45" W
C-9	89°37'02"	20.00'	31.28'	28.19'	19.87'	S 44°51'15" E
C-10	90°47'44"	20.00'	31.69'	28.48'	20.28'	N 45°21'08" E
C-11	89°12'16"	20.00'	31.14'	28.09'	19.72'	N 44°38'52" E
C-12	90°47'44"	20.00'	31.69'	28.48'	20.28'	N 45°21'08" E
C-13	89°12'16"	20.00'	31.14'	28.09'	19.72'	S 44°38'52" E
C-14	90°47'44"	20.00'	31.69'	28.48'	20.28'	N 45°21'08" E
C-15	89°15'00"	20.00'	31.15'	28.10'	19.74'	S 44°37'30" E
C-16	11°38'03"	260.98'	52.99'	52.90'	26.59'	N 83°25'58" W
C-17	17°45'06"	200.00'	61.97'	61.72'	31.23'	N 86°29'30" W
C-18	16°01'14"	232.00'	64.87'	64.66'	32.65'	S 85°37'34" E
C-19	01°58'55"	228.98'	7.92'	7.92'	3.96'	S 78°36'24" E
C-20	100°24'08"	20.00'	35.05'	30.73'	24.01'	N 50°12'04" E

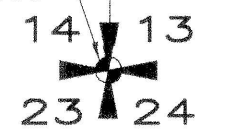


**HEALTH CERTIFICATE**

SANITARY RESTRICTIONS AS REQUIRED BY IDAHO CODE TITLE 50, CHAPTER 13, HAVE BEEN SATISFIED. SANITARY RESTRICTIONS MAY BE REIMPOSED, IN ACCORDANCE WITH THE IDAHO CODE TITLE 50, CHAPTER 13, SECTION 50-1326, BY THE ISSUANCE OF A CERTIFICATE OF DISAPPROVAL.

12/02/03 DATE  
 [Signature] M. W. [Signature]  
 DEPARTMENT OF ENVIRONMENTAL QUALITY, EHS  
 South Central District Health EHS

CP# 657699



RIEDEL & ASSOCIATES, INC.  
 202 FALLS AVENUE  
 TWIN FALLS, IDAHO 83301  
 EASTWOOD SUBDIVISION, PHASE 4  
 SHEET 1 OF 2

