

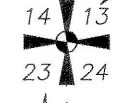
off 700110243910 + 4000

T 2138

Jim V  
Rhee

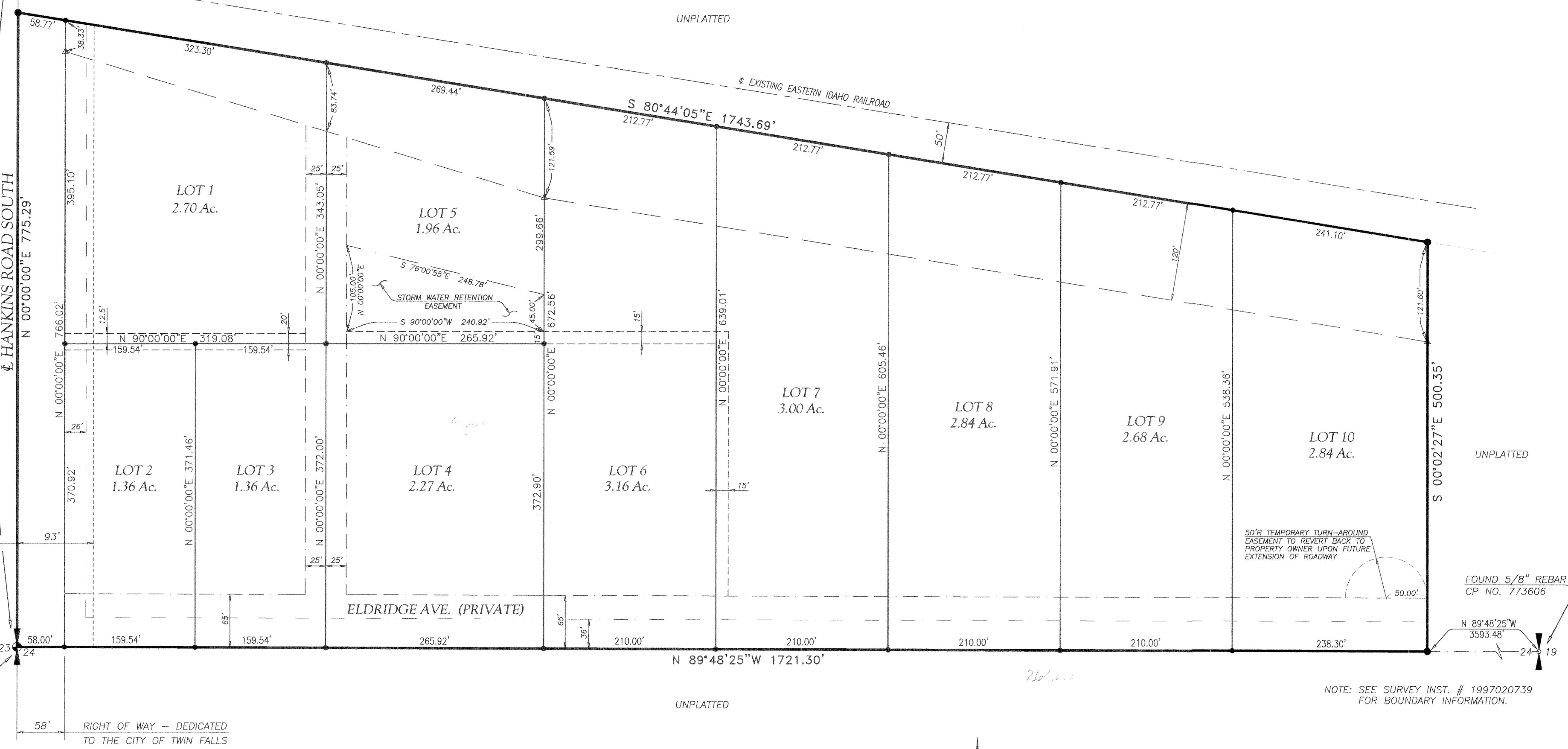
5-10-02 affid Sub 02-007307

FOUND BRASS CAP  
CP NO. 657699



1864.71'

BASE BEARING - SURVEY INST. NO. 1997020739  
S 00°00'00"W 2640.00'  
HANKINS ROAD SOUTH



UNPLATTED

UNPLATTED

UNPLATTED

UNPLATTED

REAL POINT OF BEGINNING  
FOUND BRASS CAP  
CP NO. 670544

FOUND 5/8" REBAR  
CP NO. 773606

NOTE: SEE SURVEY INST. # 1997020739  
FOR BOUNDARY INFORMATION.

NOTES:

- 1. A 9.5' LANDSCAPE EASEMENT EXISTS ALONG LOT FRONTAGES ADJACENT TO 3200 EAST ROAD.

HEALTH CERTIFICATE

Sanitary restrictions as required by Idaho Code Title 50, Chapter 13, have been satisfied. Sanitary restrictions may be reimposed, in accordance with Idaho Code Title 50, Chapter 13, Section 50-1326, by the issuance of a certificate of disapproval.

Date: Oct 24, 2000 [Signature] 219  
South Central District Health Dept., EHS

LEGEND:

- SUBDIVISION BOUNDARY (solid line)
- SECTION LINE (dashed line)
- LOT LINE (thin solid line)
- CANAL CO. ACCESS & MAINTENANCE EASEMENT (dashed line)
- PUBLIC ACCESS, UTILITY & DRAINAGE EASEMENT (dashed line)
- UTILITY & DRAINAGE ESMN'T. (dashed line)
- ACCESS, UTILITY, DRAINAGE & RAILROAD EASEMENT (dashed line)
- FOUND BRASS CAP (circle with cross)
- SET 5/8" x 30" REBAR & CAP (circle)
- SET 1/2" x 24" REBAR & CAP (dot)
- ANGLE POINT IN ESMN'T. (NOT SET) (triangle)



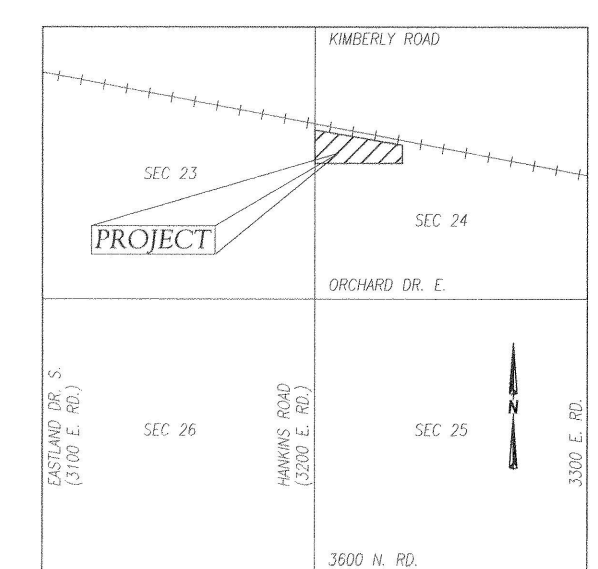
1" = 100'

INCOM INDUSTRIAL PARK  
SUBDIVISION NO. 1

Located In  
S2 NW4, Section 24  
T. 10 S., R. 17 E., B.M.  
Twin Falls County, Idaho  
2000

VICINITY SKETCH

not to scale



**EHM** Engineers, Inc.  
ENGINEERS/SURVEYORS/PLANNERS