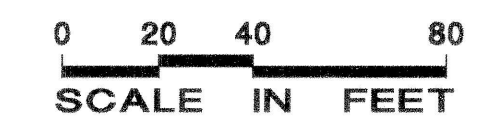
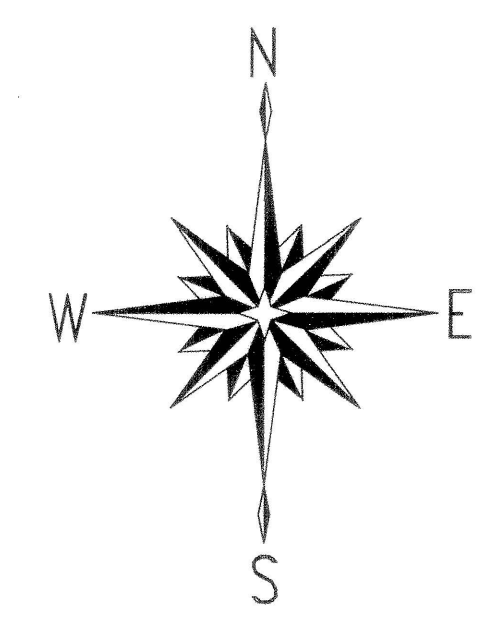


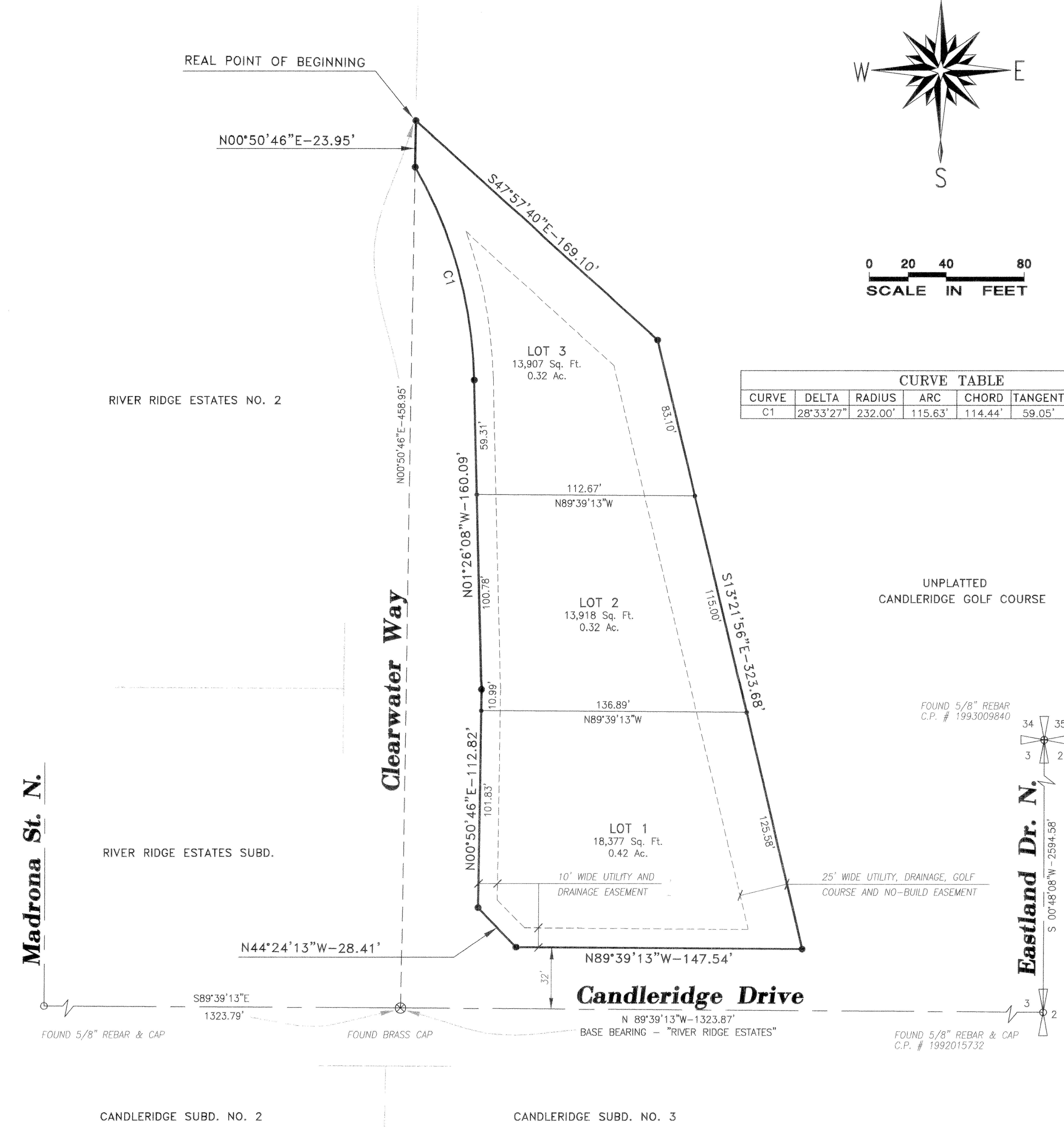
The Links At Candleridge

Located In
SE 4 NE 4, Section 3
Township 10 South
Range 17 East
Boise Meridian
Twin Falls County
Idaho
2002

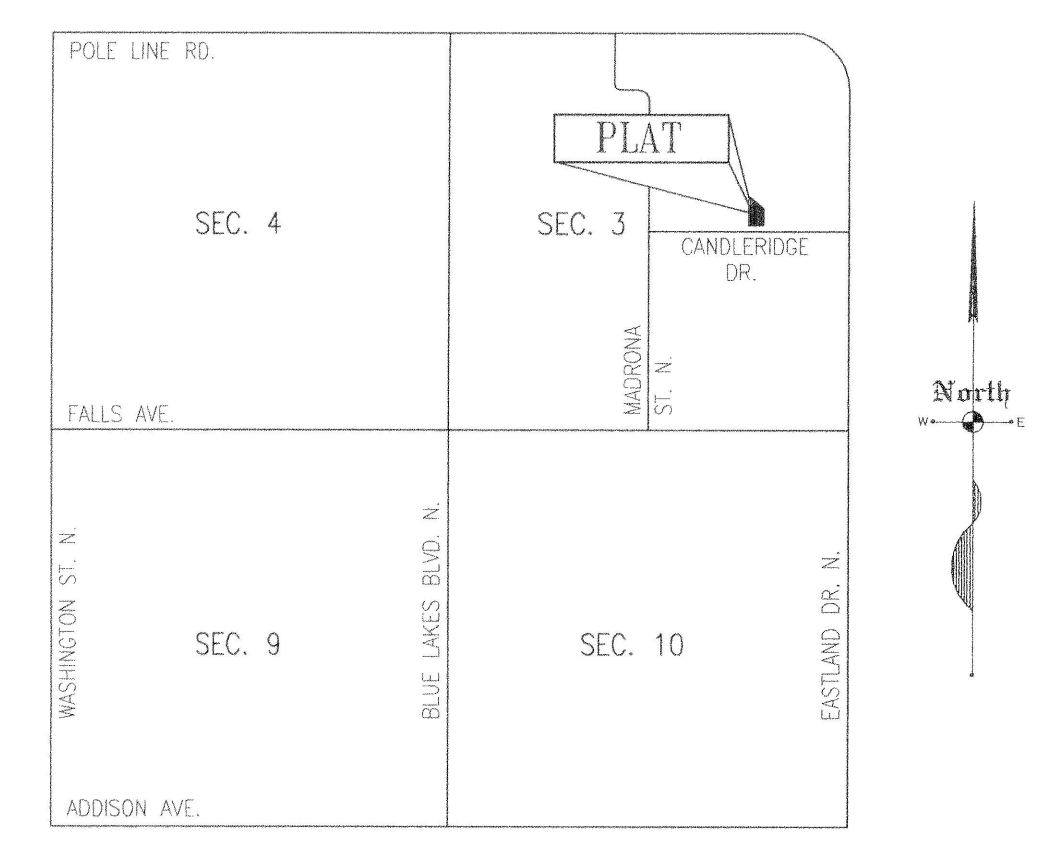
Twin Falls County, Idaho
Recorded for:
EHM ENGINEERS
03:10pm Oct. 15, 2002
2002 - 021231
No. of Pages: 2 Fee: \$22.00
ROBERT S. FORT (Recorder)
Deputy: SL



CURVE TABLE						
CURVE	DELTA	RADIUS	ARC	CHORD	TANGENT	CHORD BRG.
C1	28°33'27"	232.00'	115.63'	114.44'	59.05'	N15°42'52"W



VICINITY SKETCH N.T.S.



LEGEND

- SUBDIVISION BOUNDARY LINE
- LOT LINE
- ROADWAY CENTER LINE
- EASEMENT LINE (TYPE AS NOTED)
- SET 1/2"x24" REBAR & CAP (LS 1000)
- SET 5/8" REBAR & CAP (LS 1000)
- FOUND BRASS CAP

HEALTH CERTIFICATE

Sanitary restrictions as required by Idaho Code Title 50, Chapter 13, have been satisfied. Sanitary restrictions may be reimposed, in accordance with Idaho Code Title 50, Chapter 13, Section 50-1326, by the issuance of a certificate of disapproval.

Date: Aug 9, 2002

[Signature] 219
South Central District Health Dept., EHS