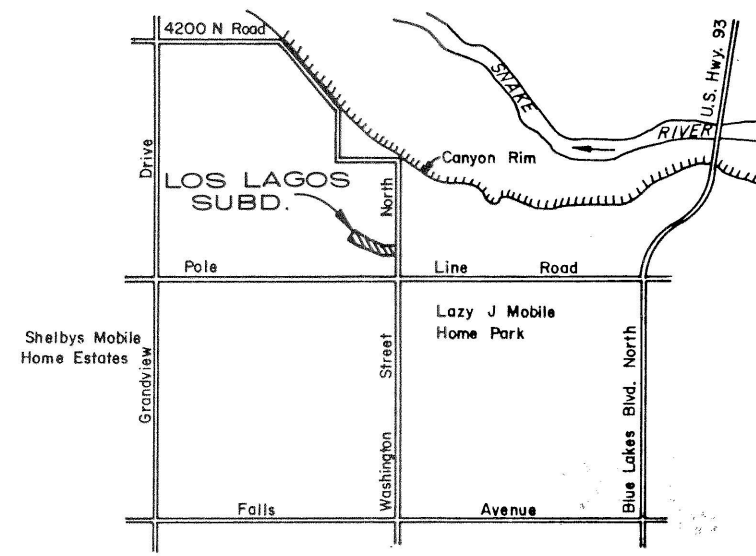
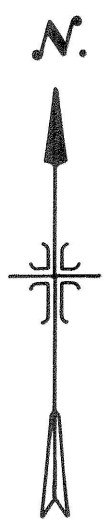
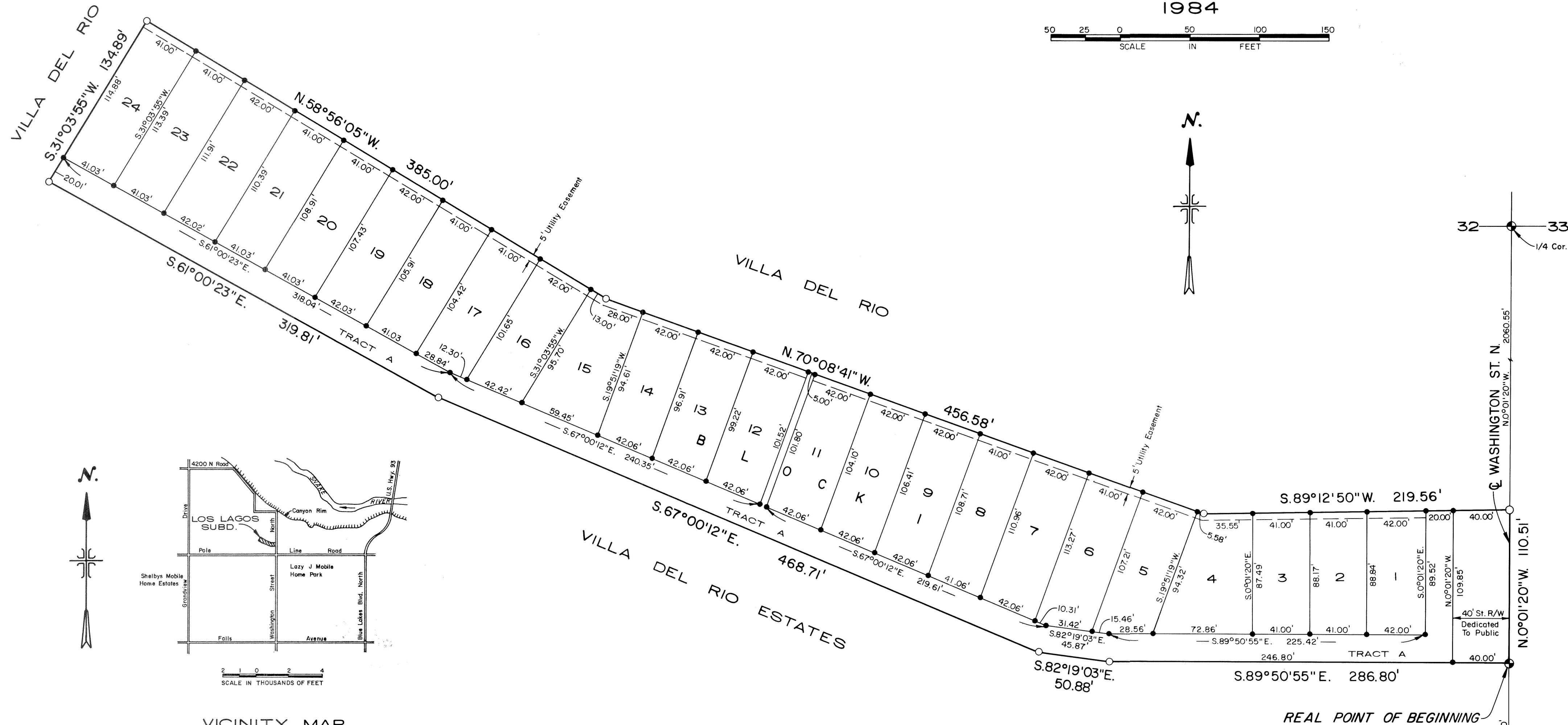
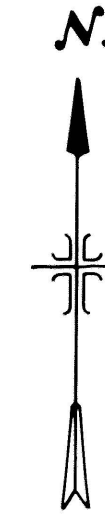
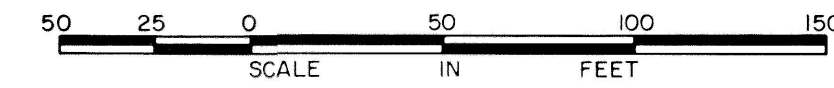


PLAT SHOWING 870513
 LOS LAGOS SUBDIVISION
 A SUBDIVISION IN
 A PORTION OF THE SE1/4 SE1/4 SECTION 32, T.9 S., R.17 E., B.M.
 TWIN FALLS COUNTY, IDAHO
 1984



VICINITY MAP
 SCALE IN THOUSANDS OF FEET

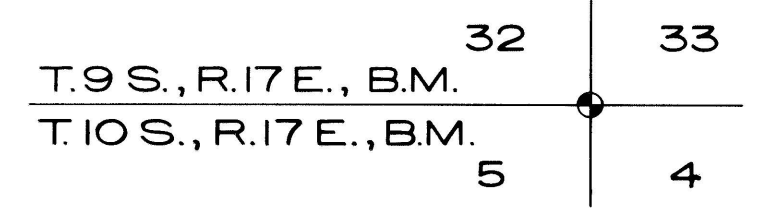
VICINITY MAP

NOTES

1. Building setbacks in this subdivision shall conform to the applicable Zoning Regulations of the City of Twin Falls - Zone R4 P.U.D.
2. Tract A is hereby designated as a landscaped lot and a Blanket Easement for sanitary sewer, public utilities, drainage, irrigation, public service and pedestrian ingress-egress easement.
3. A Blanket Easement is hereby reserved for a sprinkler system over all of the Los Lagos Subdivision, except for public dedicated right-of-ways.

LEGEND

- Boundary Line
- ⊕ Brass Cap
- 3/4" x 30" Iron Pin
- 5/8" x 30" Iron Pin
- 1/2" x 24" Iron Pin



UNPLATTED

J-U-B ENGINEERS, INC.
 Engineers Surveyors Planners
 Twin Falls, Idaho

Book 13 Page 14
 Los Lagos Subdivision