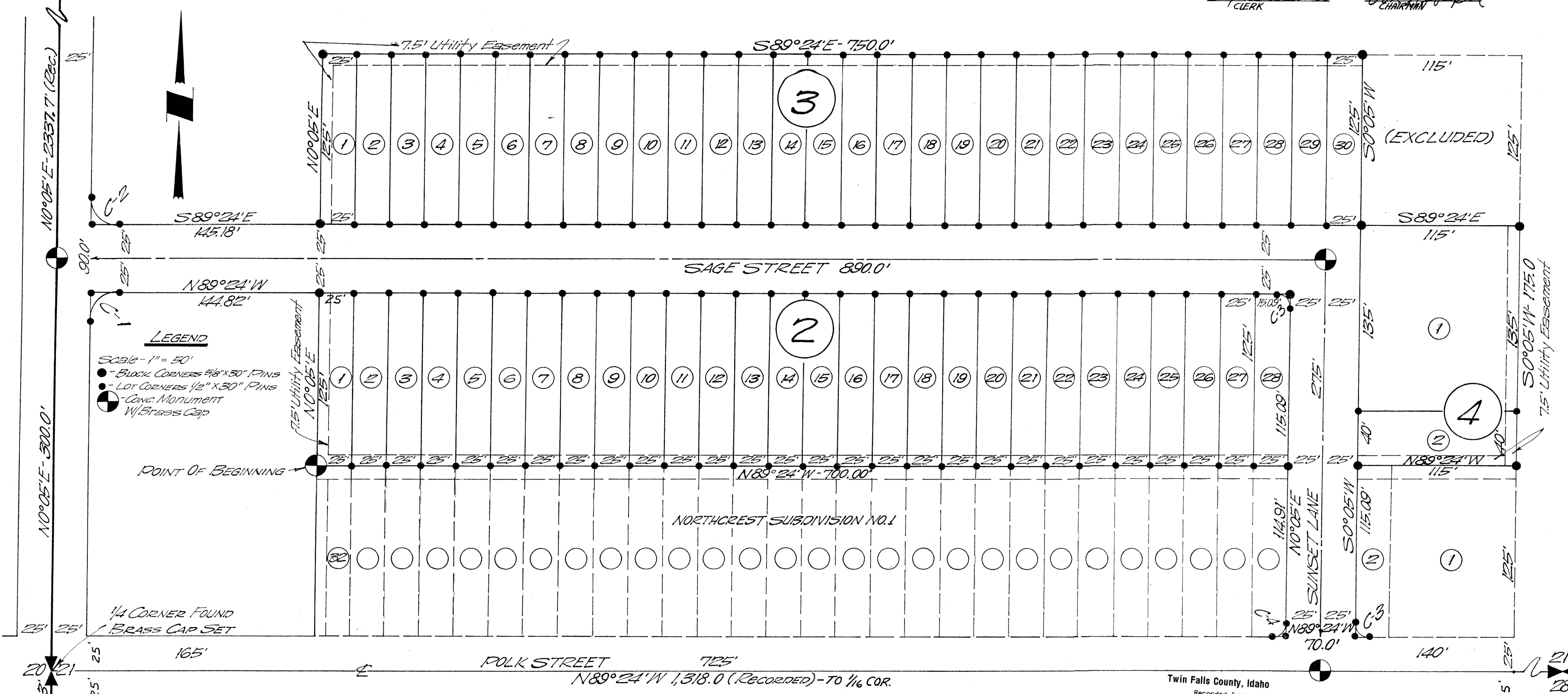


The foregoing plat was duly accepted and approved by the city council of KIMBERLY, Idaho on this 25 day of March, 1972
 Edythe Widmer CLERK
 Jim Gabeler CHAIRMAN

17
20
16
21

SECTION CORNER PK NAIL FOUND
 PART OF THE SW4 NW4 SECTION 21, T.10S, R.18E, B.M.

NORTHCREST SUBDIVISION NUMBER TWO



LEGEND
 Scale - 1" = 50'
 ● - BLOCK CORNERS 7/8" X 30" PINS
 ○ - LOT CORNERS 1/2" X 30" PINS
 ⊙ - CONC. MONUMENT W/ BRASS CAP

POINT OF BEGINNING

1/4 CORNER FOUND
 BRASS CAP SET

20
29
21
28

VICINITY SKETCH
 SCALE 1" = 2 MILES

6	5	4	3	2	1
7	8	9	10	11	12
18	17	16	15	14	13
19	20	21	22	23	24
30	29	28	27	26	25
31	32	33	34	35	36

CURVE DATA

CURVE	RADIUS	TANGENT	BEARINGS	DIST.	ANGLE	LENGTH
C-1	20.0	20.18	N45°20'30"E	28.41	90°31'	31.60
C-2	20.0	19.82	S44°39'30"E	28.16	89°29'	31.24
C-3	10.0	9.91	S44°39'30"E	14.08	89°29'	15.62
C-4	10.0	10.09	S45°20'30"W	14.21	90°31'	15.80

COUNTY COMMISSIONERS' ACCEPTANCE
 The foregoing plat was duly accepted and approved by the Board of Commissioners of Twin Falls County, Idaho on this 22 day of March, 1972.
 H. D. Lancaster Clerk
 John L. Chaucy Chairman

COUNTY RECORDER'S CERTIFICATE
 This is to certify that the foregoing plat was filed for record in the office of the Recorder of Twin Falls County, Idaho, this 31 day of March, 1972, at 3:29 P.M., and duly recorded in Plat Book No. 10 at page 632416
 Deputy
 Ex-Officio Recorder

DEDICATION

This is to certify that the undersigned are owners in fee simple of the property hereinafter described; that the correct description of the land in this plat is as follows:

A parcel of ground located in part of the SW4 NW4 of Section 21, T.10S, R.18E, B.M. Twin Falls County, Kimberly, Idaho and more particularly described as follows:
 Beginning at the Northwest Corner of Lot 32 of Northcrest Subdivision Number 1, said corner being S89°24'E a distance of 190.00 feet and N0°05'E a distance of 150.00 feet from the West Quarter Corner of said Section 21; thence N0°05'E a distance of 125.00 feet; thence N89°24'W a distance of 144.82 feet; thence along a curve left with a 20.00 foot radius and a long chord bearing S44°39'30"E a distance of 28.16 feet; thence S89°24'E a distance of 145.18 feet; thence N0°05'E a distance of 125.00 feet; thence S89°24'E a distance of 750.00 feet; thence S0°05'W a distance of 125.00 feet; thence S89°24'E a distance of 115.00 feet; thence S0°05'W a distance of 115.00 feet; thence N89°24'W a distance of 115.00 feet; thence S0°05'W a distance of 115.00 feet; thence along a curve left with a 10.00 foot radius and a long chord bearing S44°39'30"E a distance of 14.08 feet; thence N89°24'W a distance of 70.00 feet; thence reverse direction along a curve left with a 10.00 foot radius and a long chord bearing N45°20'30"E a distance of 14.21 feet; thence N0°05'E a distance of 114.91 feet; thence N89°24'W a distance of 700.00 feet to the point of BEGINNING.
 Above containing 5.97 acres, more or less.

That it is the intention of the undersigned to and they do, hereby include said land in this plat, that the undersigned, does by these presents dedicate to the public use forever all streets as shown on this plat; the easements indicated on said plat are not dedicated to the public, but the right to use said easements is hereby perpetually reserved for public utilities and for any other use as designated hereon, and no structures other than for such purposes are to be erected within the lines of said easements.

Carl H. Miller
 Verne E. Sankey
 Rachael Miller
 Marjorie L. Farley

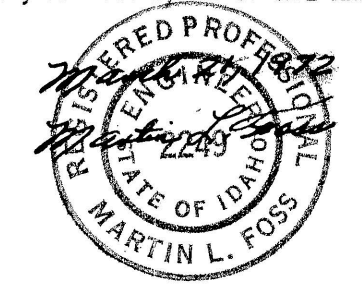
IDAHO DEPARTMENT OF HEALTH
 SOUTH CENTRAL DISTRICT HEALTH DEPT.

APPROVED [Signature]
 ENVIRONMENTALIST
 DISAPPROVED
 DATE 3-27-72

Twin Falls County, Idaho
 Recorded for:
 FOSS, MARTIN L.
 09:00:00 am Mar. 31, 1972
 0000 - 632416

CERTIFICATE of ENGINEER

This is to certify that I, Martin L. Foss, a Registered Professional Engineer in the State of Idaho, made the survey of the land described in the DEDICATION and designated herein as NORTHCREST SUBDIVISION NO. 2, and that the plat is a true and correct representation of said survey as made by me on said land.



ACKNOWLEDGEMENT STATE of IDAHO COUNTY of

On this 22 day of March, 1972, before me a Notary Public in and for said State, personally appeared the person... whose name... subscribed to the foregoing DEDICATION & CERTIFICATE OF ENGINEER and acknowledged to me that they executed the same.
 IN WITNESS WHEREOF, I have set my hand and affixed my official seal the day and year in this certificate first above written.

[Signature]
 EXP MAY 19 1975

21
28
263
(Recorded)