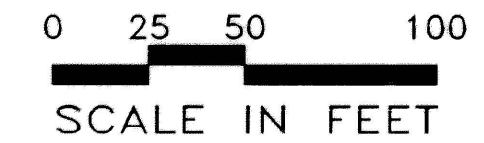


"ERICSON SUBD."

BASE BEARING - "ELIZABETH PARK PLAZA UNIT 1"  
CL ELIZABETH BLVD.

FOUND 5/8"  
REBAR & CAP  
CP #1994010670



**RUSSELL SQUARE SUBDIVISION**

**A Planned Unit Development**  
located in  
**A Portion Of Lots 1 & 2**  
of  
**Snyder Tract**  
in  
**NE<sup>4</sup> SE<sup>4</sup>, Section 15**  
**T. 10. S., R. 17 E., B.M.**  
**Twin Falls County, Idaho**  
**1995**

**LEGEND:**

- SUBDIVISION BOUNDARY LINE
- - - - - LOT LINE
- - - - - UTILITY, DRAINAGE & PEDESTRIAN INGRESS/EGRESS EASEMENT
- - - - - INGRESS/EGRESS, PARKING & UTILITY EASEMENT
- INITIAL POINT - SET BRASS CAP
- SET 5/8" x 30" REBAR & CAP
- SET 1/2" x 24" REBAR & CAP

NOTE: LOTS 9 & 12 SHALL BE USED FOR STORM WATER RETENTION, UTILITIES, RECREATION AND LANDSCAPING AS REQ'D.

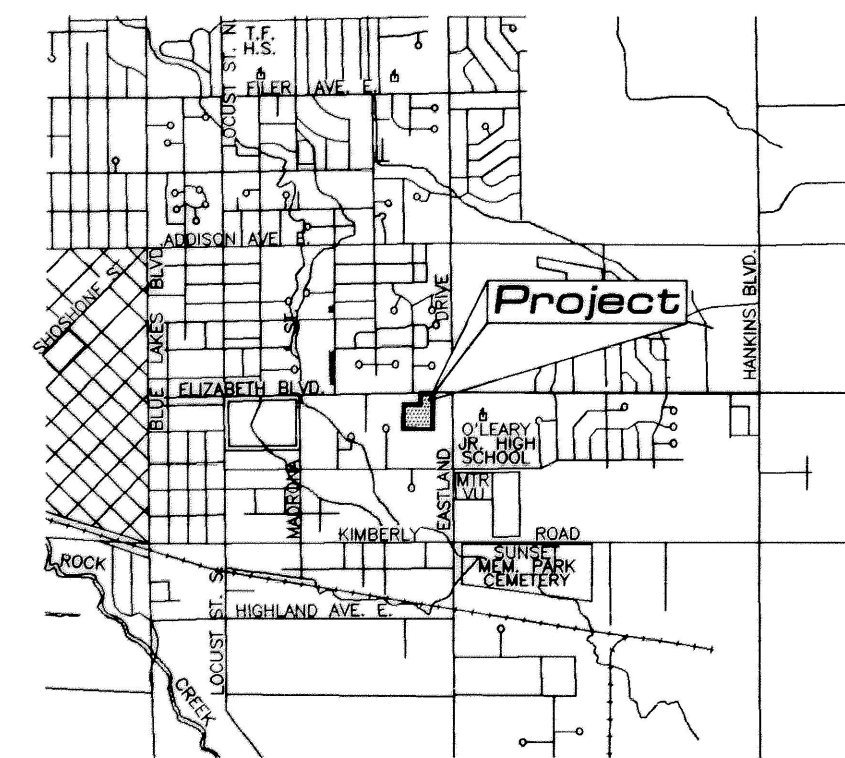
**HEALTH CERTIFICATE**

Sanitary restrictions as required by Idaho Code Title 50, Chapter 13, have been satisfied. Sanitary restrictions may be reimposed, in accordance with Idaho Code Title 50, Chapter 13, Section 50-1326, by the issuance of a certificate of disapproval.

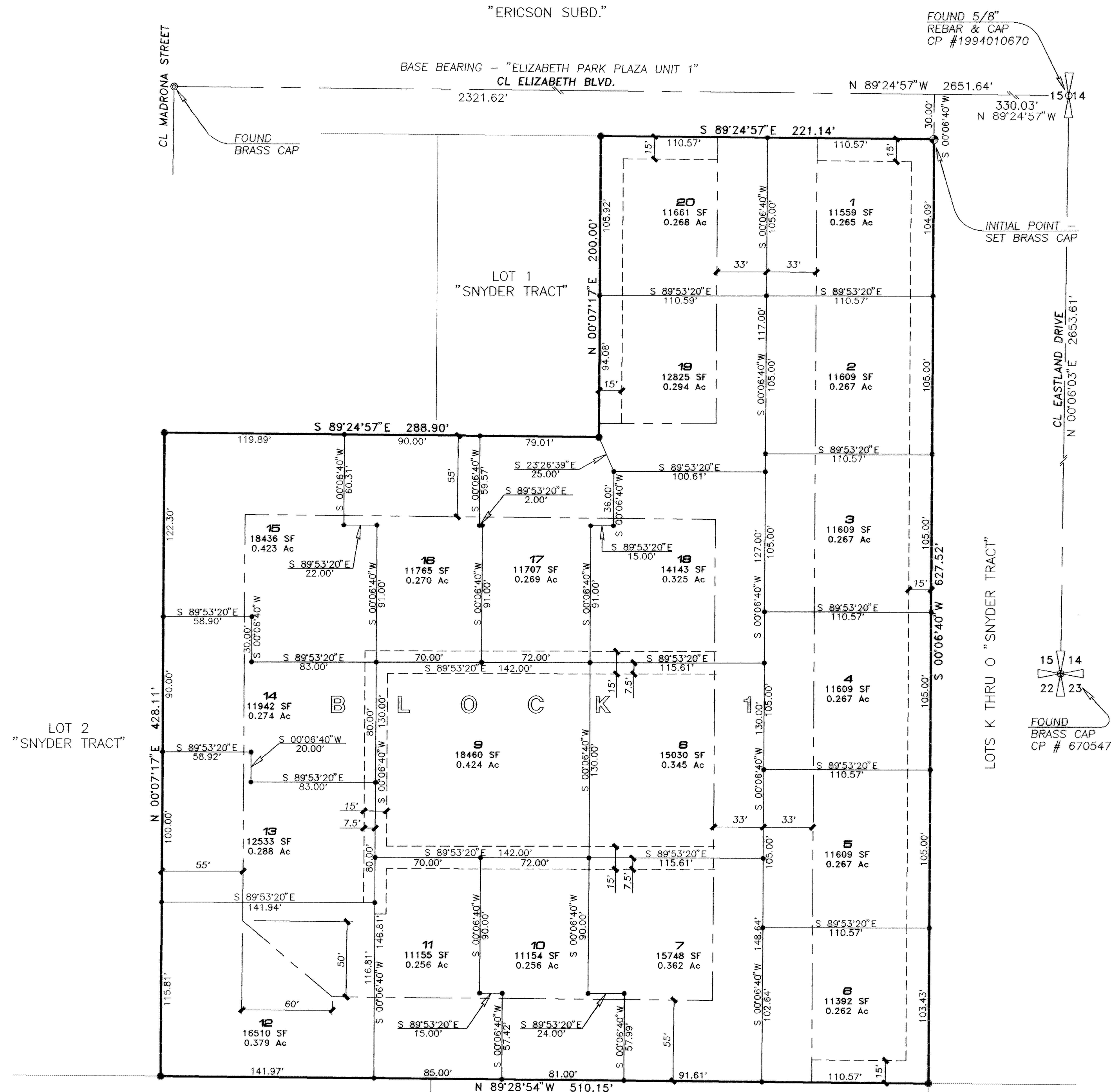
Date: June 20, 1995 *[Signature]*  
South Central District Health Dept., EHS

The lots on this plat are eligible to receive water service from the City of Twin Falls Municipal Water System (I.C. 50-1334)

**VICINITY SKETCH**  
not to scale



Twin Falls County, Idaho  
Recorded for:  
**TWIN FALLS, CITY OF**  
02:57:00 pm Jul. 25, 1995  
**1995-011483**



NOTE: SEE "ROYAL CREST SUBDIVISION"  
FOR BREAKDOWN OF BOUNDARY.