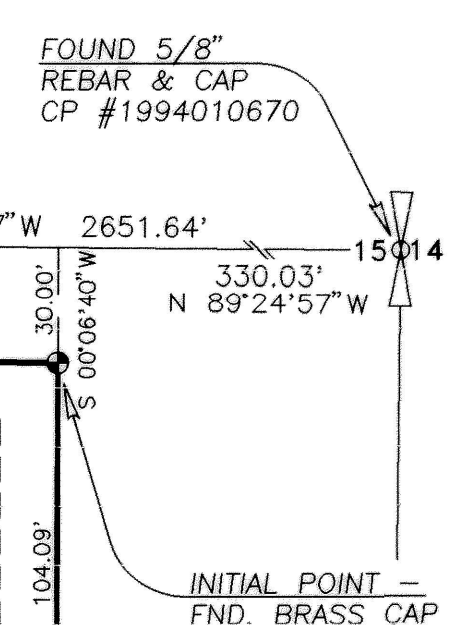
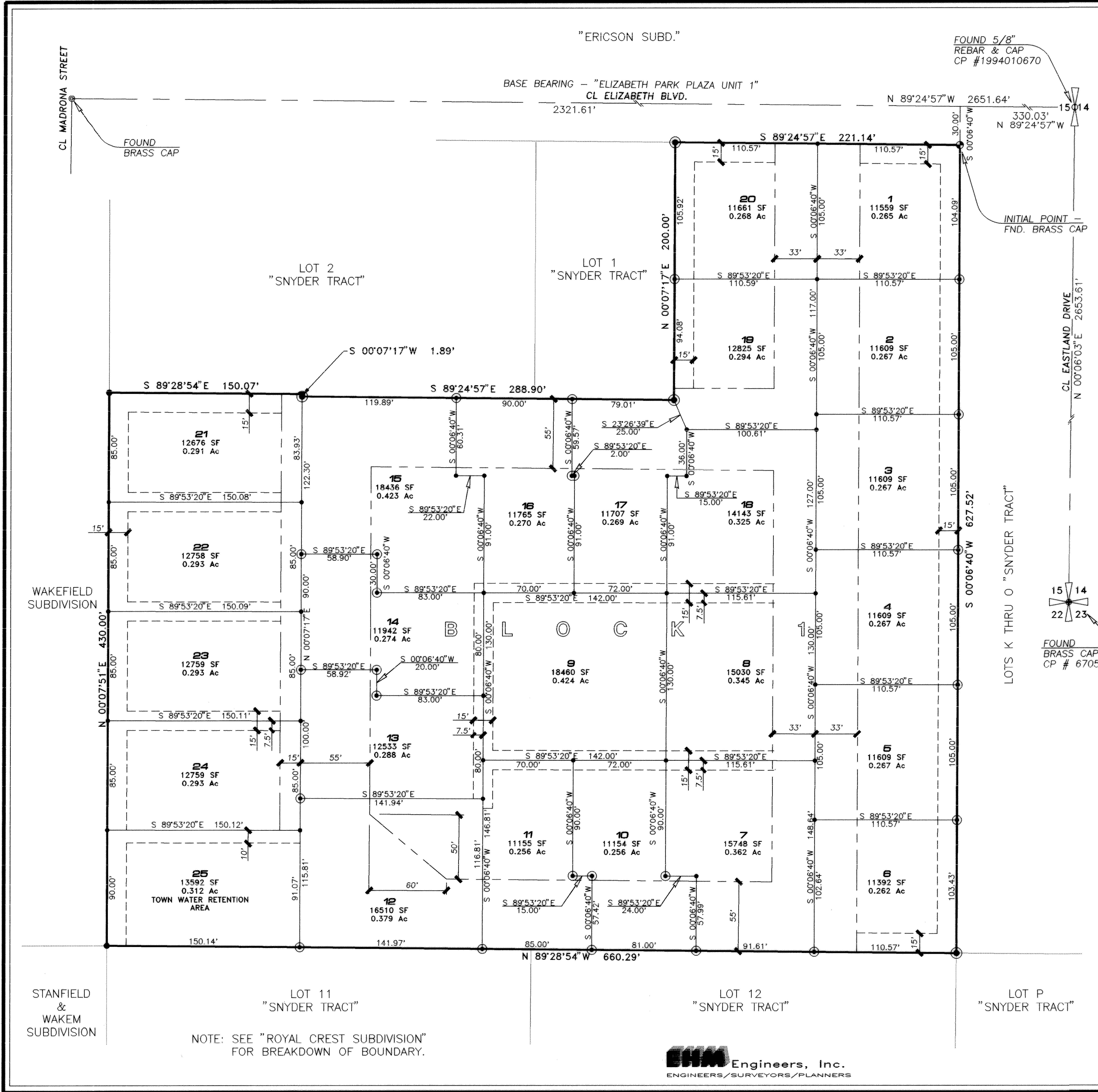


BOOK 15 PAGE 17
 RUSSELL SQUARE AMEND
 TWIN FALLS COUNTY, IDAHO
 City of TF
 1996 JUN 23 A 10:08
 1996001183
 FEE: 2200
 DEPUTY LF



AMENDED RUSSELL SQUARE SUBDIVISION

A Planned Unit Development
 located in
A Portion Of Lots 1 & 2
 of
Snyder Tract
 in
NE⁴ SE⁴, Section 15
T. 10. S., R. 17 E., B.M.
Twin Falls County, Idaho
1995

LEGEND:

	SUBDIVISION BOUNDARY LINE
	LOT LINE
	UTILITY, DRAINAGE & PEDESTRIAN INGRESS/EGRESS EASEMENT
	INGRESS/EGRESS, PARKING & UTILITY EASEMENT
	INITIAL POINT - FND. BRASS CAP
	SET 5/8" x 30" REBAR & CAP
	SET 1/2" x 24" REBAR & CAP
	FND 5/8" x 30" REBAR & CAP LS 1000
	FND 1/2" x 24" REBAR & CAP LS 1000

NOTE: LOTS 9, 12 & 25 SHALL BE USED FOR STORM WATER RETENTION, UTILITIES, RECREATION AND LANDSCAPING AS REQ'D.

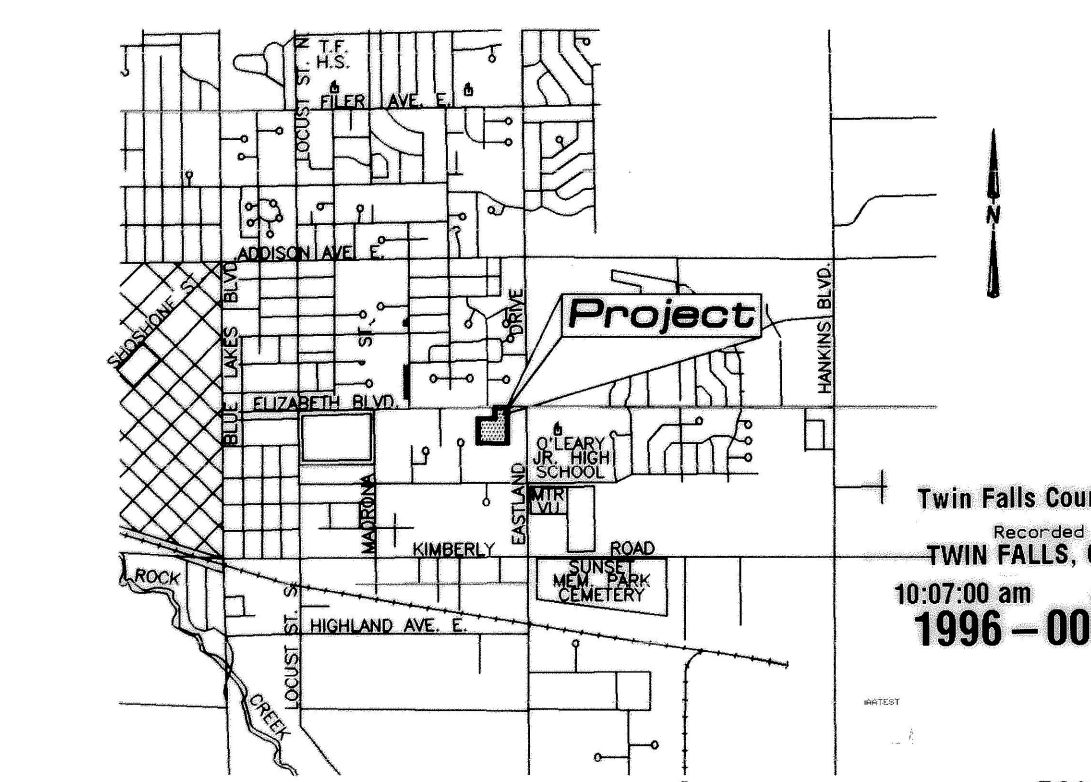
HEALTH CERTIFICATE

Sanitary restrictions as required by Idaho Code Title 50, Chapter 13, have been satisfied. Sanitary restrictions may be reimposed, in accordance with Idaho Code Title 50, Chapter 13, Section 50-1326, by the issuance of a certificate of disapproval.

Date: Dec. 18, 1995 [Signature]
 South Central District Health Dept., EHS

The lots on this plat are eligible to receive water service from the City of Twin Falls Municipal Water System (I.C. 50-1334).

VICINITY SKETCH
 not to scale



Twin Falls County, Idaho
 Recorded for:
TWIN FALLS, CITY OF
 10:07:00 am Jan. 23, 1996
1996-001183