

SOUTH MEADOWS PARK SUBDIVISION
 located in
 N² SE⁴, Section 29
 Township 10 South, Range 18 East
 Boise Meridian
 Twin Falls County, Idaho
 1993

NOTES:

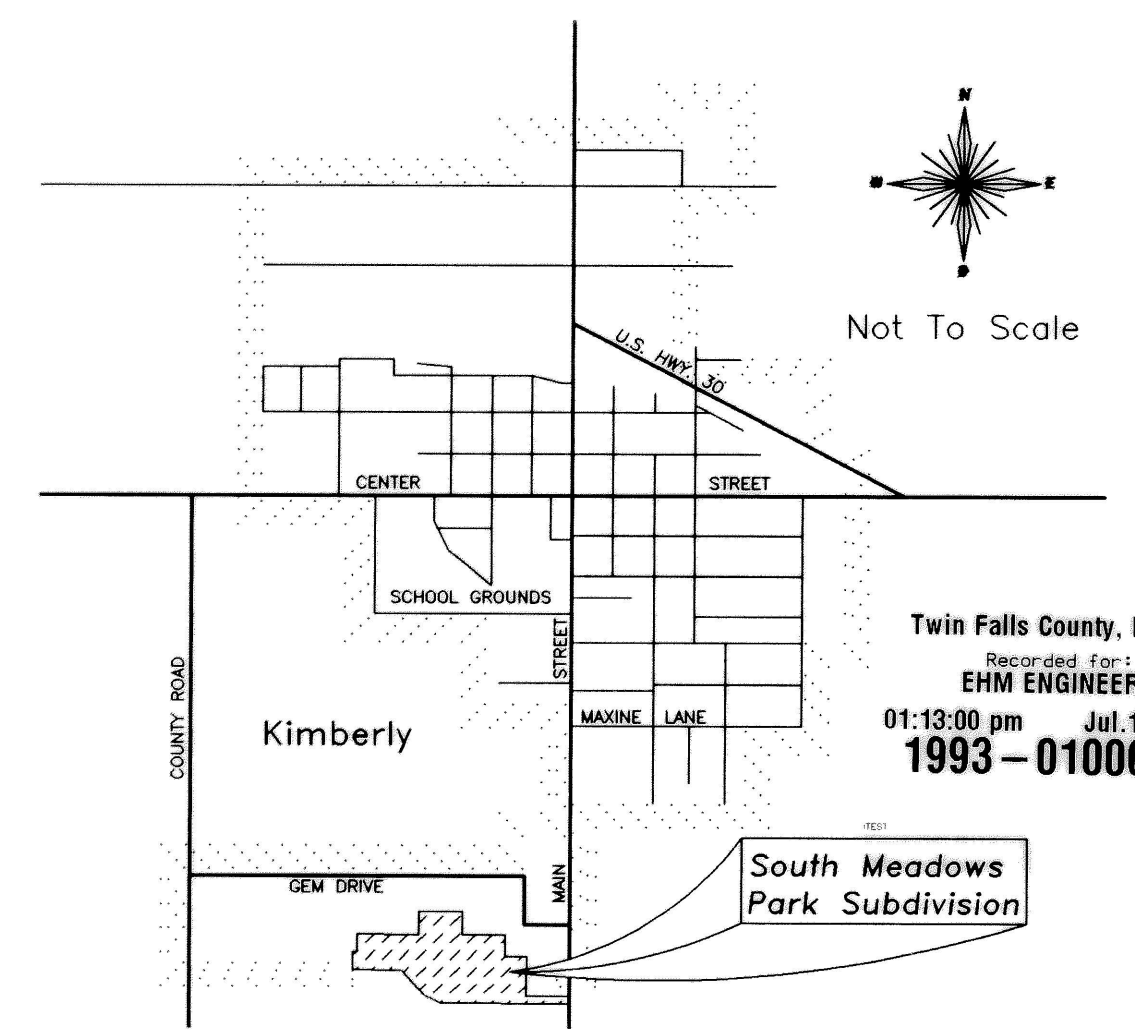
- TRACT 'A' SHALL BE COMMON AREA FOR PUBLIC USE AS A PARKS AND RECREATION AREA.
- THERE EXISTS A 5' UTILITY EASEMENT ALONG ALL FRONT LOT LINES AND A 15' UTILITY EASEMENT CENTERED ON SIDE LOT LINES WHERE SHOWN. REFER TO PLAT FOR LOCATION AND WIDTH OF OTHER EASEMENTS.

LEGEND:

- SUBDIVISION BOUNDARY LINE
- LOT LINE
- - - - - UTILITY EASEMENT
- - - - - UTILITY & IRRIGATION ESMNT.
- STREET CENTERLINE
- INITIAL POINT - SET BRASS CAP
- SET 5/8" x 30" REBAR & CAP
- SET 1/2" x 24" REBAR & CAP
- FOUND 1/2" REBAR - SET 5/8" x 30" REBAR & CAP

CURVE DATA						
CRV	DELTA	RADIUS	ARC	CHORD	TANG	CHORD BRG
1	34°01'12"	75.00	44.53	43.88	22.94	S 72°46'01"E
2	34°01'19"	100.00	59.38	58.51	30.59	S 72°46'01"E
3	34°01'24"	125.00	74.23	73.14	38.24	S 72°46'00"E
4	34°01'05"	125.00	74.22	73.13	38.24	N 72°45'57"W
5	34°01'05"	100.00	59.37	58.50	30.59	N 72°45'57"W
6	34°01'04"	75.00	44.53	43.88	22.94	N 72°45'57"W
7	90°00'00"	20.00	31.42	28.28	20.00	S 44°46'29"E
8	90°00'00"	20.00	31.42	28.28	20.00	N 45°13'31"E
9	90°00'00"	20.00	31.42	28.28	20.00	S 45°13'31"W
10	90°00'00"	20.00	31.42	28.28	20.00	N 44°46'29"W

VICINITY SKETCH



Twin Falls County, Idaho
 Recorded for:
EHM ENGINEERS
 01:13:00 pm Jul. 16, 1993
1993-010065