

SUNVIEW SUBDIVISION

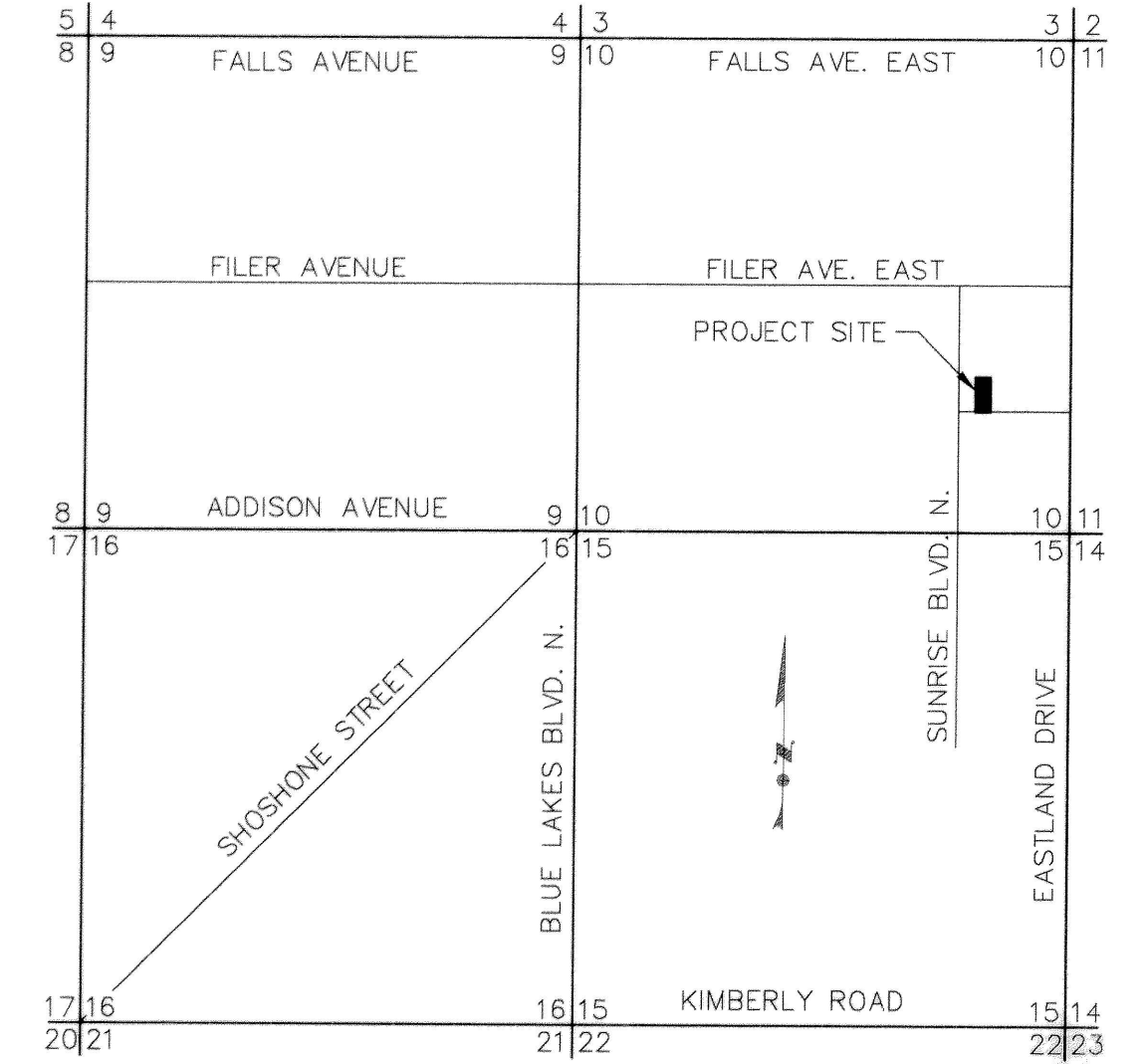
A SUBDIVISION

IN
THE NE1/4SE1/4, SECTION 10
T. 10 S., R. 17 E., B.M.
TWIN FALLS COUNTY,
CITY OF TWIN FALLS,
IDAHO

1997 120 180 FEET

1" = 60'
LEGEND

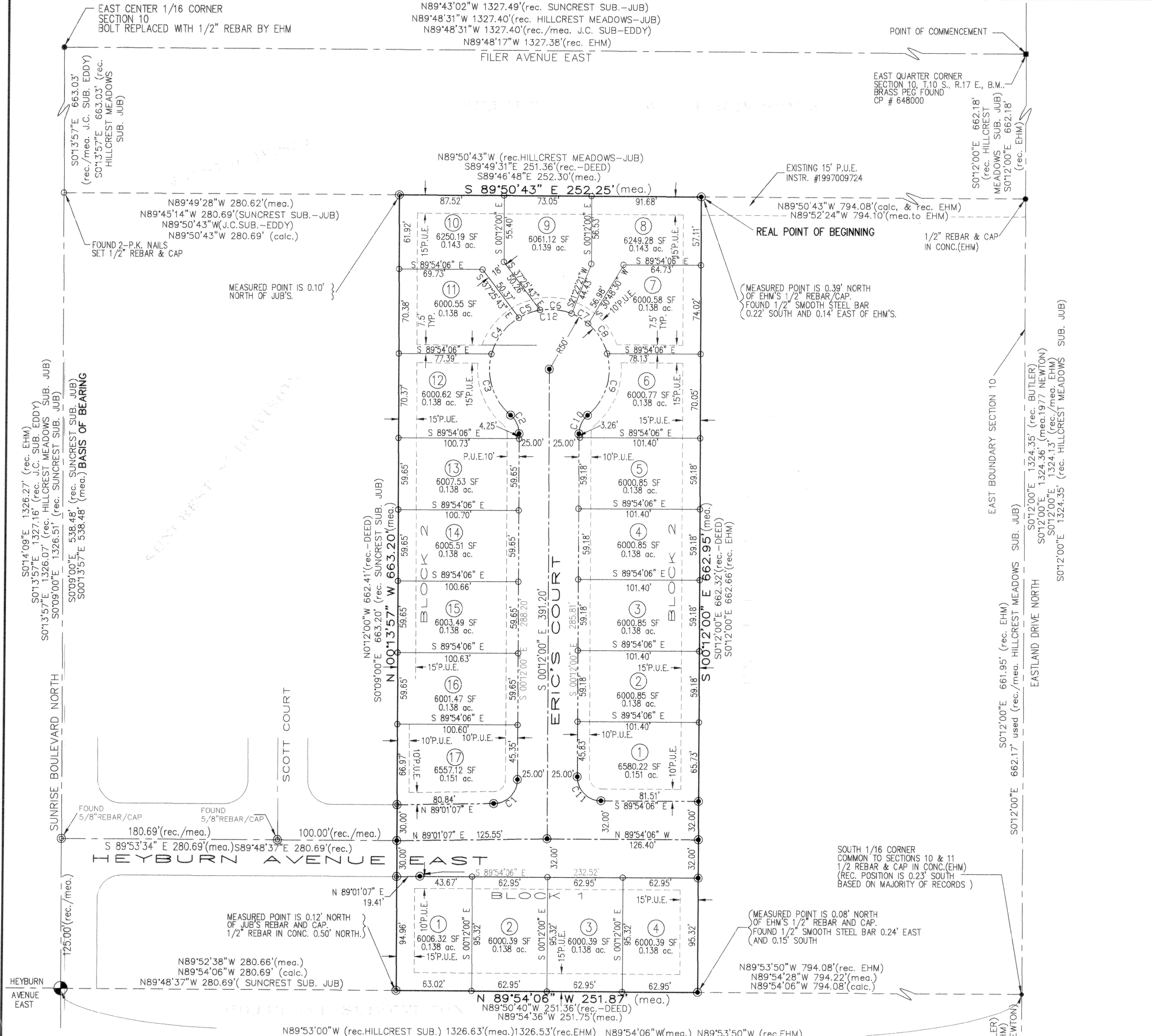
- BRASS PEG FOUND
- 1/2" REBAR W/YELLOW CAP FOUND
- BRASS CAP OR ALUM. CAP FOUND
- 5/8" X 30" REBAR/CAP SET (LS 809)
- 5/8" REBAR/YELLOW CAP FOUND
- 1/2" X 24" REBAR/CAP SET (LS 809)
- LOT NUMBER
- CENTERLINE STREET
- BOUNDARY LINE
- LOT LINE
- R/W LINE
- EASEMENTS
- PUBLIC UTILITY, SNOW REMOVAL & DRAINAGE EASEMENTS
- MEASURED, RECORDED, CALCULATED
- TYP.



VICINITY MAP
N.T.S.

Twin Falls County, Idaho
Recorded for:
TWIN FALLS, CITY OF
02:10:00 pm Sep. 23, 1997
1997-015689

- NOTES:**
- MAINTENANCE AND WEED CONTROL PURSUANT TO IDAHO CODE 22-2407 FOR ALL LOTS ARE THE RESPONSIBILITY OF THE DEVELOPER UNTIL THE LOTS ARE SOLD AND THEREAFTER ARE THE RESPONSIBILITY OF THE INDIVIDUAL LOT OWNERS.
 - LOTS WILL BE SERVED BY CITY OF TWIN FALLS DOMESTIC WATER SYSTEM AND SANITARY SEWERAGE SYSTEM.
 - EASEMENTS:** THERE WILL BE A 10' WIDE PUBLIC UTILITY AND SNOW REMOVAL EASEMENT ALONG ALL LOT LINES BORDERING STREETS. THERE WILL BE A 15' WIDE PUBLIC UTILITY AND DRAINAGE EASEMENT ALONG THE BACK OF LOTS 1 THRU 4, BLOCK 1 AND LOTS 1 THRU 16, BLOCK 2. THERE WILL BE A 15' WIDE PUBLIC UTILITY AND DRAINAGE EASEMENT ALONG THE WEST SIDE OF LOT 1, BLOCK 1 AND THE EAST SIDE OF LOT 4, BLOCK 1. THERE WILL BE A 14' WIDE PUBLIC UTILITY AND DRAINAGE EASEMENT CENTERED ON THE LOT LINE COMMON TO LOTS 11 AND 12, BLOCK 2 AND LOTS 6 AND 7, BLOCK 2. THERE WILL BE A 10' WIDE PUBLIC UTILITY AND DRAINAGE EASEMENT ALONG THE WEST SIDE OF LOT 17, BLOCK 2.
 - TRAVEL WAYS IN THE DEDICATED RIGHTS OF WAY WILL BE BUILT TO CITY OF TWIN FALLS STANDARDS AND SPECIFICATIONS.
 - ALL LAND INCLUDED IN THIS PLAT IS SUBJECT TO THE RESTRICTIVE COVENANTS FOR SUNVIEW SUBDIVISION INSTRUMENT No. _____



CURVE TABLE

NUMBER	DELTA	CHORD BRG	RADIUS	LENGTH	TANGENT	CHD LENGTH
C1	89°13'07"	N 44°24'34" E	20.00'	31.14'	19.73'	28.09'
C2	49°59'41"	N 25°11'51" E	20.00'	17.45'	9.33'	16.90'
C3	64°37'40"	S 17°52'51" E	50.00'	56.40'	31.63'	53.46'
C4	44°33'39"	S 36°42'48" W	50.00'	38.89'	20.49'	37.91'
C5	21°41'44"	S 69°50'29" W	50.00'	18.93'	9.58'	18.82'
C6	30°41'11"	N 83°58'03" W	50.00'	26.78'	13.72'	26.46'
C7	18°40'51"	N 59°17'02" W	50.00'	16.30'	8.22'	16.23'
C8	34°36'54"	N 32°38'10" W	50.00'	30.21'	15.58'	29.75'
C9	65°07'24"	N 17°13'59" E	50.00'	56.83'	31.93'	53.82'
C10	49°59'41"	S 24°47'51" W	20.00'	17.45'	9.33'	16.90'
C11	89°42'06"	S 45°03'03" E	20.00'	31.31'	19.90'	28.21'
C12	279°59'23"	S 89°48'00" W	50.00'	244.34'	NDIN-TANGENT	64.29'

HEALTH CERTIFICATE

SANITARY RESTRICTIONS AS REQUIRED BY IDAHO CODE TITLE 50, CHAPTER 13, HAVE BEEN SATISFIED. SANITARY RESTRICTIONS MAY BE REIMPOSED, IN ACCORDANCE WITH IDAHO CODE TITLE 50, CHAPTER 13, SECTION 50-1326, BY THE ISSUANCE OF A CERTIFICATE OF DISAPPROVAL.

[Signature]
SOUTH CENTRAL DISTRICT HEALTH DEPT., EHS

SOUTHEAST CORNER
SECTION 10, T.10 S., R.17 E., B.M.
CP # 647999

JOHN J. STRAUBHAR CONSULTING ENGINEER
TWIN FALLS, IDAHO