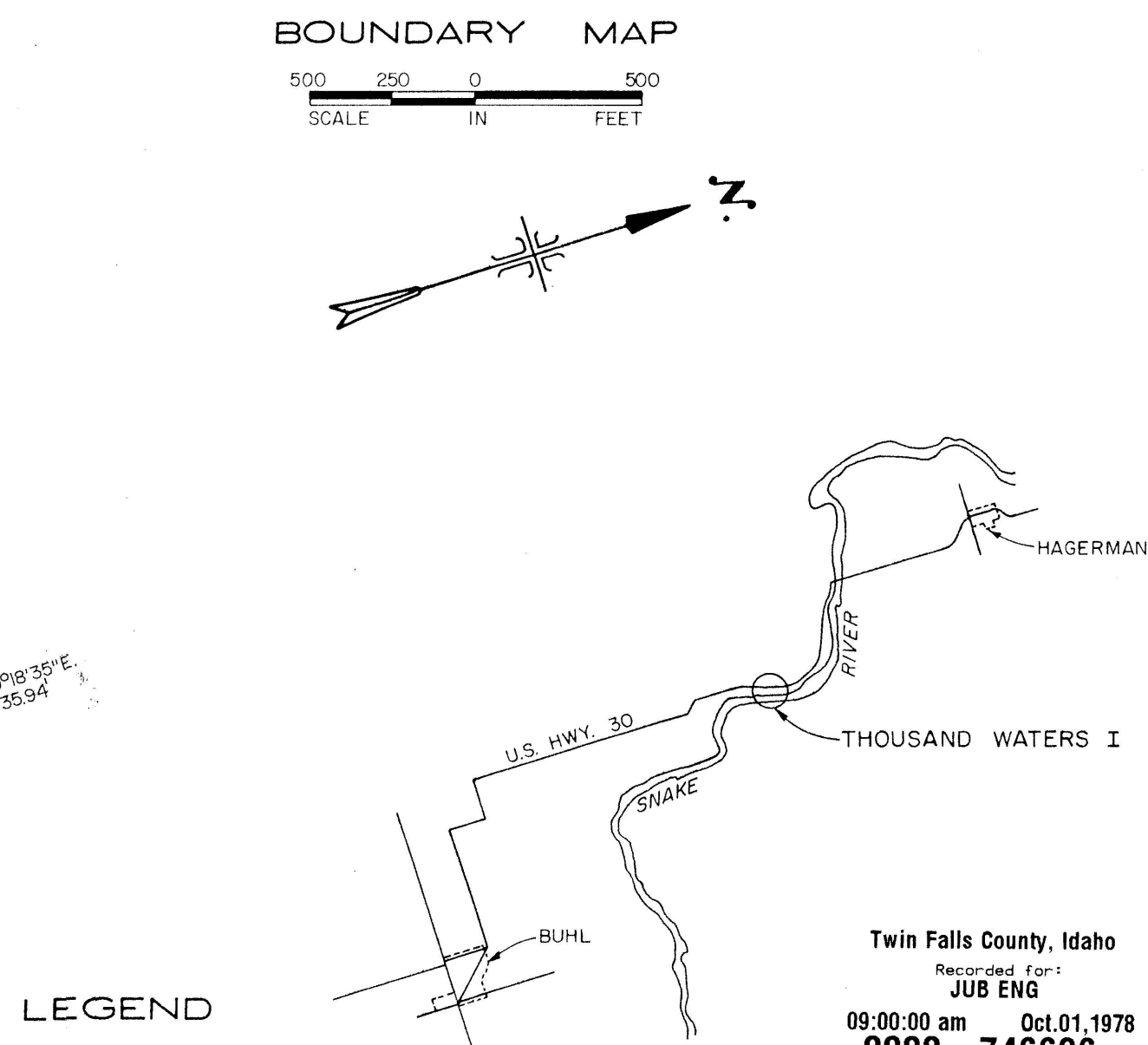
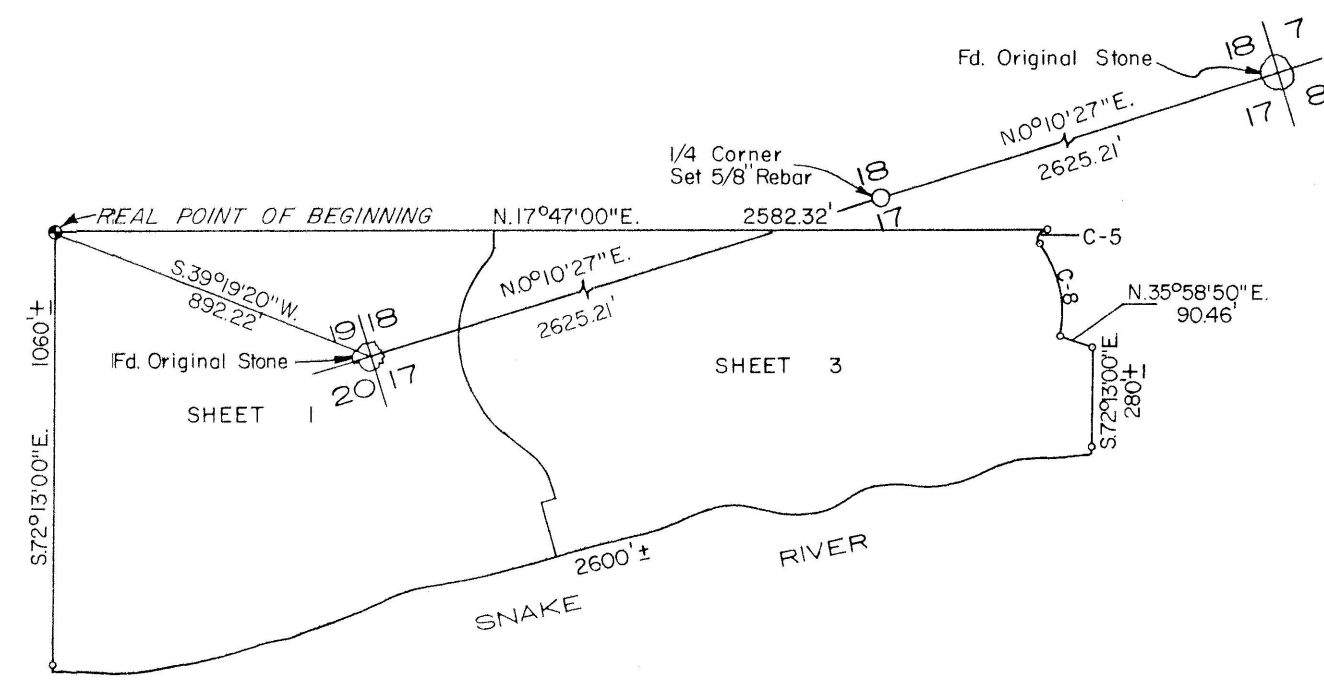
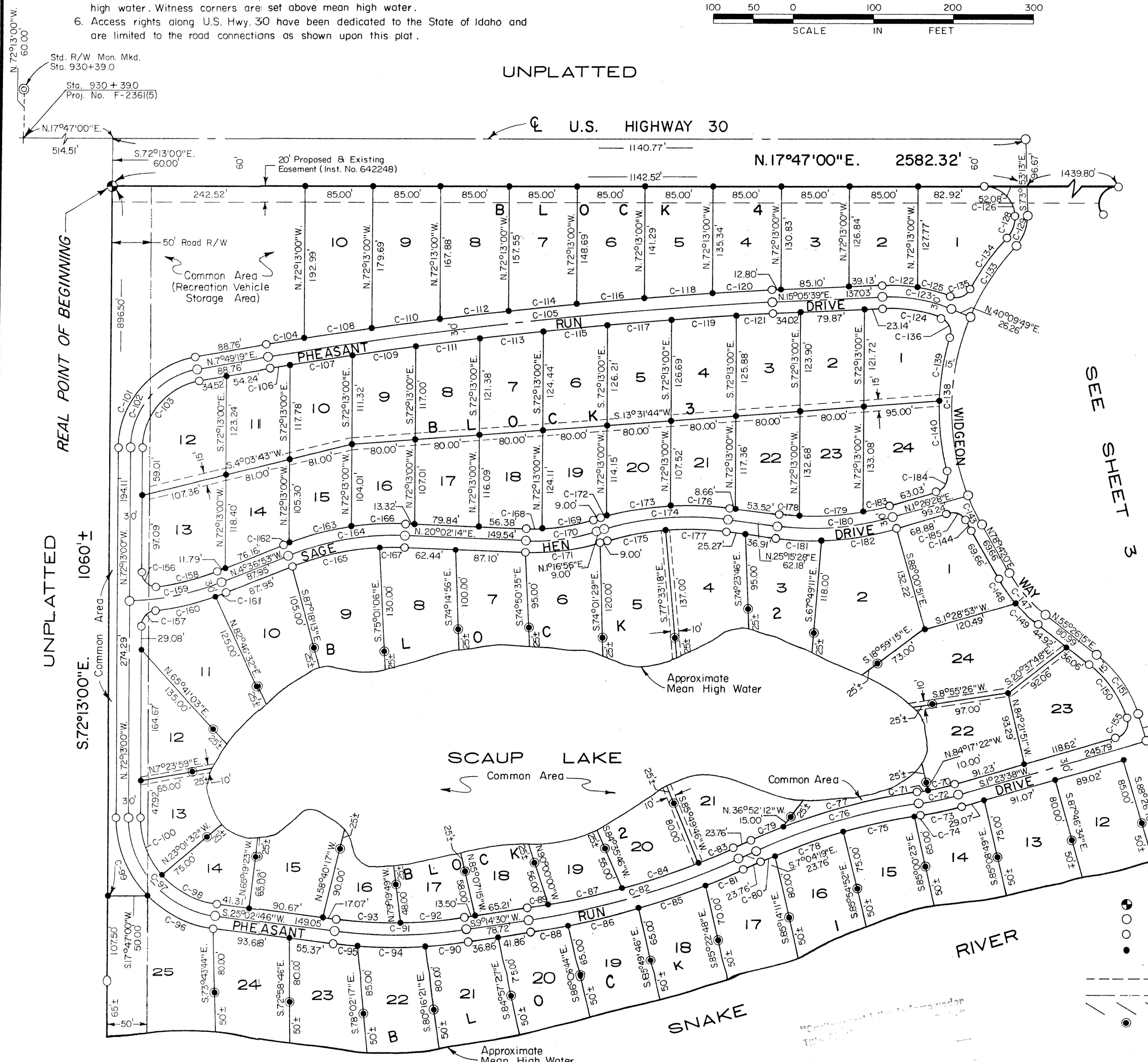
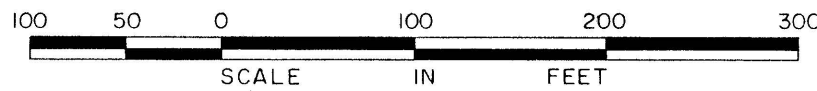


NOTES

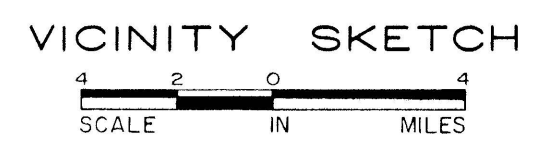
1. There is hereby reserved along all lot frontages adjacent to streets, a 5' wide easement for public utilities.
2. There is hereby reserved for members of the Home Owners Association and their families a 5' access easement around the lakes within the subdivision.
3. The property line on all water frontages is the mean high water line. Mean high water line is the line found at the margin of the area occupied by the water for the greater portion of each average year.
4. Building set backs for lots fronting the Twin Falls Highway District Right-Of-Way shall be set from the Right-Of-Way.
5. Lot dimensions shown are from pin to pin, plus or minus dimensions are to mean high water. Witness corners are set above mean high water.
6. Access rights along U.S. Hwy. 30 have been dedicated to the State of Idaho and are limited to the road connections as shown upon this plat.

PLAT SHOWING
THOUSAND WATERS I
A SUBDIVISION OF
PORTIONS OF LOTS 6 & 7 SEC. 17 ; SE1/4 SE1/4 SEC. 18 ;
NE1/4 NE1/4 SEC. 19 ; AND LOT 2 SEC. 20 , T.8 S. , R. 14 E. , B.M.
TWIN FALLS COUNTY, IDAHO
1977



LEGEND

- Brass Cap
- 3/4" x 30" Steel Rebar
- 5/8" x 30" Steel Rebar
- 1/2" x 24" Steel Rebar
- Proposed Easement, Pedestrian Access & Utility
- Twin Falls Highway District Right-Of-Way
- Public Right-Of-Way
- Witness Corner 1/2" Rebar Set



J-U-B ENGINEERS INC.
 Engineers Planners
 Twin Falls, Idaho