

75691

BY 04181

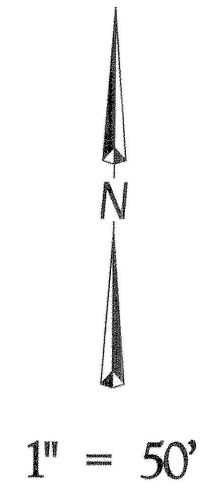
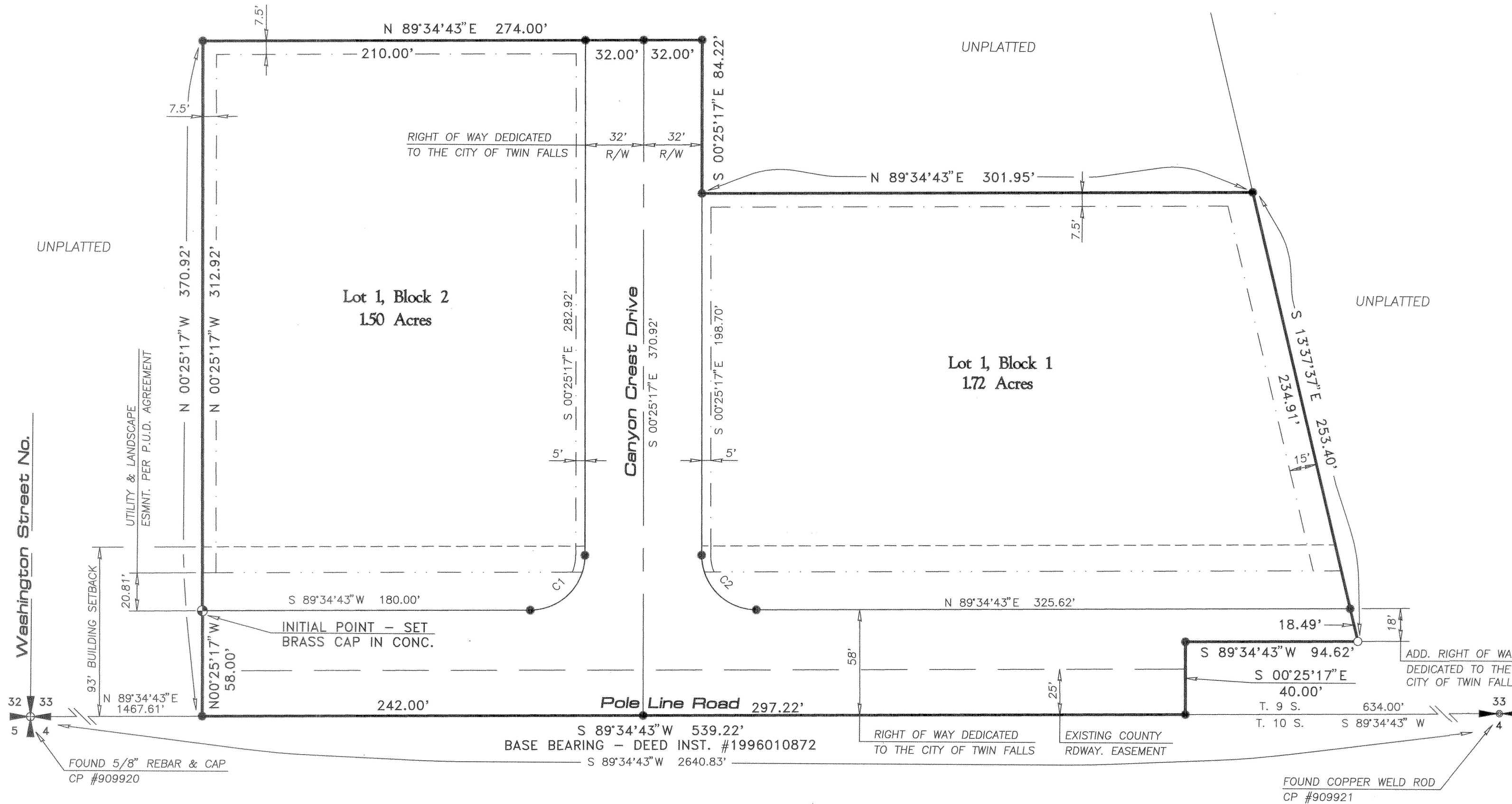
UNPLATTED

UNPLATTED

UNPLATTED

UNPLATTED

Washington Street No.



WESTPARK COMMERCIAL SUBD. NO. 1

Located In
 S2 SE4 SW4, Section 33
 T. 9 S., R. 17 E., B.M.
 Twin Falls County, Idaho
 1997

LEGEND:

- PROPERTY BOUNDARY LINE
- STREET CENTERLINE
- LOT LINE
- BUILDING SETBACK
- UTILITY EASEMENT
- LANDSCAPE & UTILITY EASEMENT
- COUNTY ROAD EASEMENT
- INITIAL POINT - SET BRASS CAP IN CONCRETE
- SET 5/8" x 30" REBAR & CAP (LS 1000)
- FOUND 5/8" x 30" REBAR & CAP (LS 1000)

CURVE DATA

CVE	DELTA	RADIUS	ARC	CHORD	TANGENT	CHORD BRG
1	90°00'00"	30.00	47.12	42.43	30.00	S 44°34'43"W
2	90°00'00"	30.00	47.12	42.43	30.00	N 45°25'17"W

IRRIGATION CERTIFICATE

Pursuant to Idaho Code 31-3805, I, David M. Shotwell, Managing Partner for Westpark Partners, An Idaho General Partnership, as owner, do hereby state that the irrigation water rights appurtenant and the assessment obligation of the lands in this plat have been transferred from said lands. Lots within the subdivision will not be entitled to any irrigation water rights and will not be obligated for assessments from any Irrigation District and / or Canal Company.

David M. Shotwell
 David M. Shotwell, Managing Partner

WATER SYSTEM CERTIFICATE

Pursuant to Idaho Code 50-1334, I, David M. Shotwell, Managing Partner for Westpark Partners, An Idaho General Partnership, as owner, do hereby state that the lots on this plat are eligible to receive water service from the City of Twin Falls Municipal Water System.

David M. Shotwell
 David M. Shotwell, Managing Partner

HEALTH CERTIFICATE

Sanitary restrictions as required by Idaho Code Title 50, Chapter 13, have been satisfied. Sanitary restrictions may be reimposed, in accordance with Idaho Code Title 50, Chapter 13, Section 50-1326, by the issuance of a certificate of disapproval.

NOV. 21, 1997 *[Signature]*
 Date: South Central District Health Dept., EHS

VICINITY SKETCH

